



Acellular Dermal Matrix

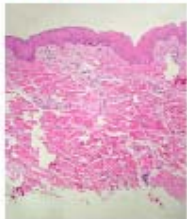
BES

ADMATRIX

What is ADMATRIX ?

ADMATRIX is our ADM product, made from normal porcine skin.

What is ADM ?



Porcine skin (×100)

Decellularization
→



Porcine ADM (×100)

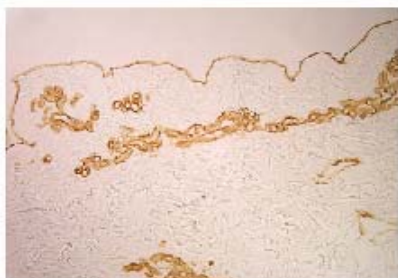
ADM stands for **A**cellular **D**ermal **M**atrix, the dermal layer in decellularized state by removing keratinocytes and dermal cells (fibroblasts, endothelial cells, etc.) from skin tissue.

Features of ADMATRIX



- **Similar to the human physiological dermal structure**
Being made from porcine skin, ADMATRIX has a tissue structure, very similar to the human dermis.
- **Closer to the skin in-vitro conditions**
Retaining the basal membrane, ADMATRIX can make an in-vitro test closer to the in-vivo invasive assay conditions.
- **Easy cross-section observation**
Since ADMATRIX does not stick to the culture container, observation of the cross-sectional cell conditions is convenient.
- **Tougher than collagen gel and sponges**
ADMATRIX is fairly stronger in texture and easier to handle than collagen gel and sponges.

Retaining basement membrane — Similar structure to human in-vivo matrix



Type IV collagen (× 200)

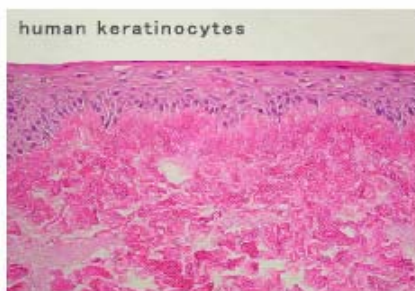


Laminin (× 200)

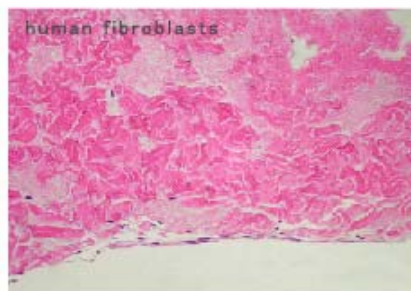
Advantages of retaining the basement membrane

- Higher adhesive rate for epithelial cells.
(Higher proliferating/differentiation rate for fibroblasts.)
- Maintaining the biological activity

Easy to create skin models



human keratinocytes

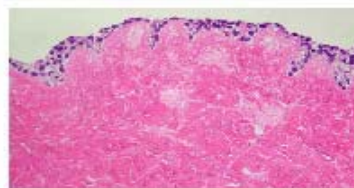


human fibroblasts

The skin models made from ADMATRIX (× 200)

Also applicable to . . .

- As a scaffold for . . .
 - Small intestine model
 - Cornea model
 - Vascular model, etc.
- Other epithelial/mesenchyme cell culture
- Cell/cell interaction analysis



Human small intestine epithelium
made from ADMATRIX (× 200)

Technology provided by Dr. Yoshihiro Takami, Associate Professor of Plastic Surgery, Kyorin University
(JP PATPEND 2003-430492 & 2004-24351)

Product Number : KBC-B19KRN001-EX

Product Name : **ADMATRIX®**

Contents of the Product

ADMATRIX® 6 packets (φ 22mm, 1 piece/packet)
 Culture inserts 6 pieces (0.8 μ m pore size, for 6-well plate)
 Filter paper set 1 set (φ 22mm, 10 sheets)

Price : ¥26000 / \$248 / €200

Distributor



COSMO BIO CO., LTD.

Inspiration for Life Science

TOYO EKIMAE BLDG. 2-20, TOYO 2CHOME
 KOTO-KU, TOKYO 135-0016, JAPAN

TEL : +81-3-5632-9617

FAX : +81-3-5632-9618

URL : <http://www.cosmobio.co.jp/>

e-mail : export@cosmobio.co.jp

BES, Inc.

5F Narita Bldg., 3-43-16 Hongo, Bunkyo-ku, Tokyo 113-0033, JAPAN
 Tel:+81-3-5840-6531 Fax:+81-3-5802-5021 <http://www.bcsinc.co.jp>