



Certificate of Analysis

Human Adult Purified Bone Marrow CD34 Stem/Progenitor Cells - Cryopreserved Vial

Catalog number:	BM34C- 1 (0.1 x 10 ⁶ cells/vial)
Lot Number:	13701905
Source ID:	N/A
Description:	CD34 ⁺ progenitor cells isolated from freshly collected adult human bone marrow via immunomagnetic separation. After isolation, the CD34 cells were evaluated for purity and viability by flow cytometry. Cells were then cryopreserved in Cryostor CS10 (BioLife Solution, Seattle, WA) using CoolCell (BioCision, San Diego, CA) freezing at -1°C/min.
Source:	Freshly collected adult human bone marrow (Cat#: BM008F-4)
Storage Conditions:	Prepare cells for long term frozen storage in Liquid Nitrogen vapor phase or thaw for further experiments.
Positive Markers:	CD34 ⁺ , CD45 ⁺
Biosafety:	Cells should be handled following biosafety level 2 procedures. Universal precautions should be utilized when working with these cells. Use aseptic techniques when thawing or handling the cells.

The following donor screening tests have been performed:

CMV testing upon request

Serological Testing:

- Syphilis
- Antibody Screen

Infectious Disease Panel:

- Hepatitis B Core Antibody (Anti-HBc EIA)
- Hepatitis B Surface Antigen (HBsAg EIA)
- Hepatitis C Virus Antibody (Anti-HCV EIA)
- Human Immunodeficiency Virus Antibody (HIV 1/2 plus O)
- Human T-Lymphotropic Virus Antibody (HTLV-I/II)
- HIV-1/HCV/HBV Nucleic Acid Testing
- WNV Nucleic Acid Testing
- Trypanasoma cruzi Antibody



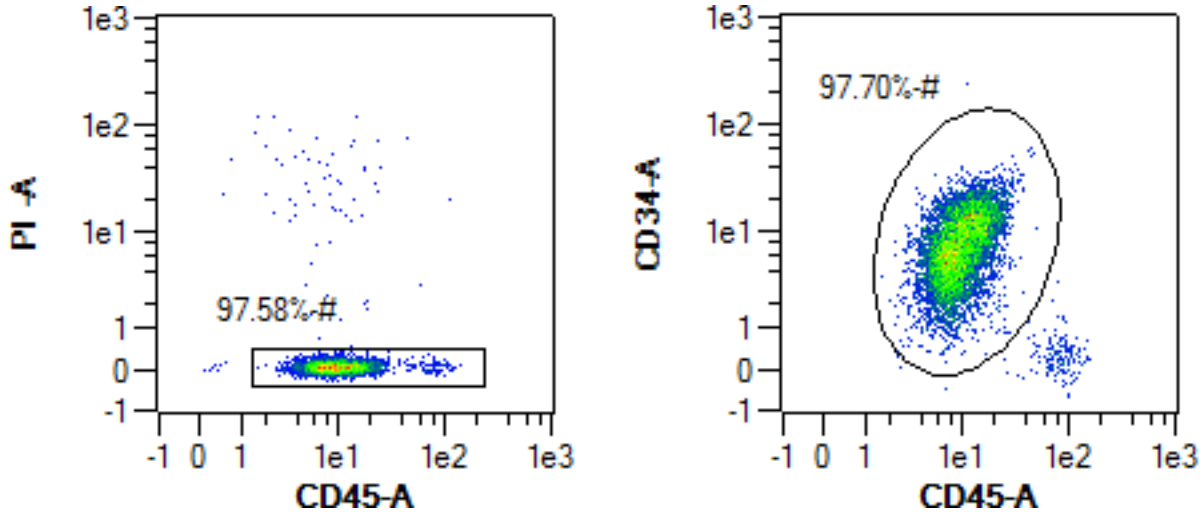
Certificate of Analysis

Human Adult Purified Bone Marrow CD34 Stem/Progenitor Cells - Cryopreserved Vial

Catalog Number: BM34C-1 (0.1 x 10⁶ cells/vial)

Lot Number: 13701905

Flow Cytometry Analysis



Surface Marker Summary

CD45 ⁺ /PI ⁻	CD34 ⁺ Cells
97.58 %	97.70 %

Donor Demographics and Lot Specific Information

Source ID	Age	Gender	Ethnicity	Blood Type	Cryopreservation Date
N/A	24	Female	Caucasian	A-Pos	December 27, 2013

Donor Testing Panel Results: Negative for all donor screening tests performed

Released by:

Wen Wang Ph.D.