



## Certificate of Analysis

### Human Adult Leukopak - Cryopreserved Bags

---

Catalog number:	PB001 (2000-2500 x 10 <sup>6</sup> cells/bag prior to cryopreservation)
Lot Number:	16038477
Source ID:	D316246
Description:	Leukapheresis material was collected from a normal, healthy donor in ACD-A anticoagulant. The leukapheresis material was stained to identify various subpopulations by Flow Cytometer. The LeukoPak was then cryopreserved in Cryostor CS10 (BioLife Solution, Seattle, WA) using a controlled-rate freezing process. The cells are also available in a fresh, non-frozen format.
Source:	Freshly collected Leukopak (Cat# PB001F-1) from HemaCare.
Instructions:	Upon arrival, either prepare cells for long term frozen storage in Liquid Nitrogen vapor phase or thaw for further experiments.
Principle Markers:	CD3 <sup>+</sup> , CD4 <sup>+</sup> , CD8 <sup>+</sup> , CD14 <sup>+</sup> , CD19 <sup>+</sup> , CD45 <sup>+</sup> , CD56 <sup>+</sup>
Biosafety:	Cells should be handled following biosafety level 2 procedures. Universal precautions should be utilized when working with these cells. Use aseptic techniques when thawing or handling the cells.

The following donor screening tests have been performed:

CMV testing upon request

**Serological Testing:**

- Syphilis
- Antibody Screen

**Infectious Disease Panel:**

- Hepatitis B Core Antibody (Anti-HBc EIA)
- Hepatitis B Surface Antigen (HBsAg EIA)
- Hepatitis C Virus Antibody (Anti-HCV EIA)
- Human Immunodeficiency Virus Antibody (HIV 1/2 plus O)
- Human T-Lymphotropic Virus Antibody (HTLV-I/II)
- HIV-1/HCV/HBV Nucleic Acid Testing
- WNV Nucleic Acid Testing
- Trypanasoma cruzi Antibody



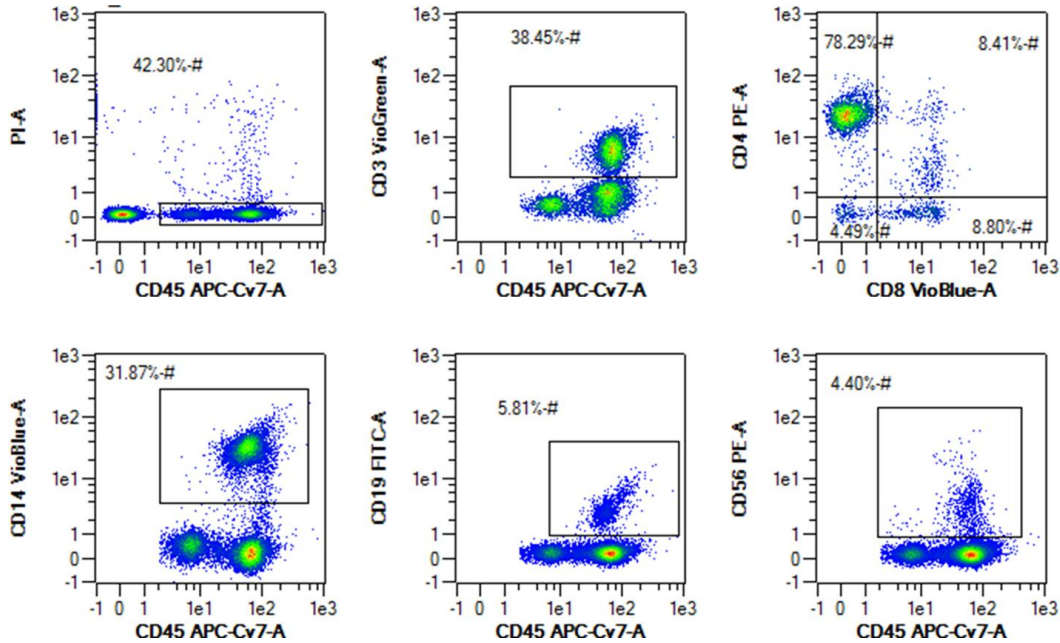
## Certificate of Analysis

### Human Adult Leukopak - Cryopreserved Bags

Catalog Number: PB001 (2000-2500 x 10<sup>6</sup> cells/bag)

Lot Number: 16038477

#### Flow Cytometry Analysis



Flow Staining was from the original leukapheresis material displayed on CD45<sup>+</sup>/PI<sup>-</sup> population post thaw.

#### Surface Marker Summary

CD45 <sup>+</sup> /PI <sup>-</sup>	CD3 <sup>+</sup> T Cells	CD14 <sup>+</sup> Cells	CD19 <sup>+</sup> Cells	CD56 <sup>+</sup> Cells
42.30 %	38.45 %	31.87 %	5.81 %	4.40 %

#### Donor Demographics and Lot Specific Information

Source ID	Age	Gender	Ethnicity	Blood Type	Cryopreservation Date
D316246	20	Male	Hispanic/Latino	O Positive	February 26, 2016

**Donor Testing Panel Results:** Negative for all donor screening tests performed

Released by:

*Wendy Way Ph.D.*