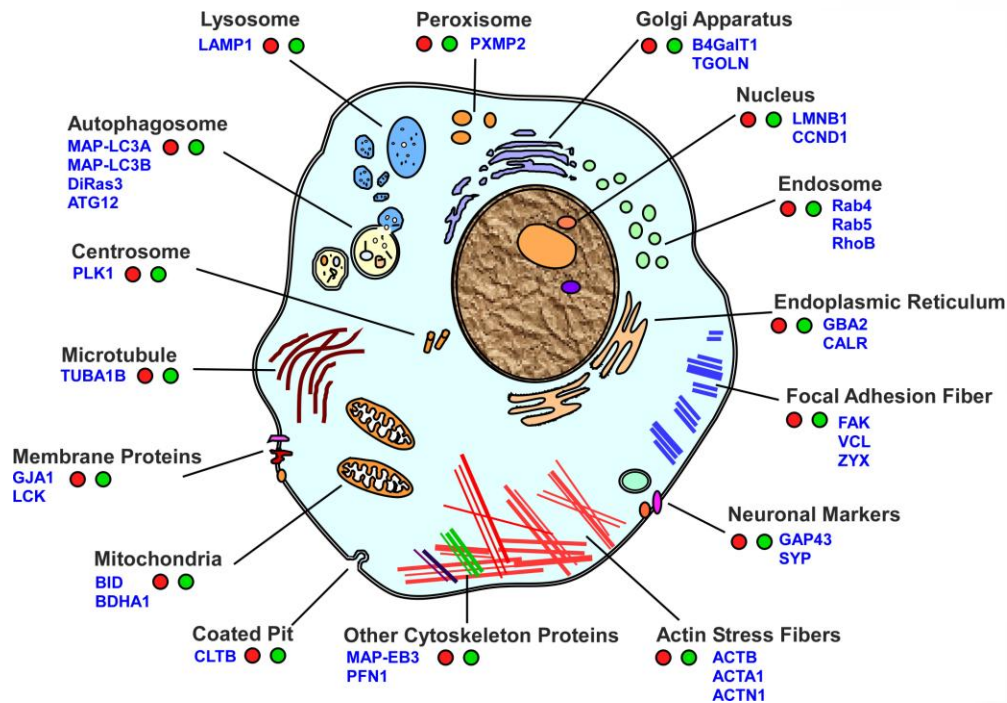
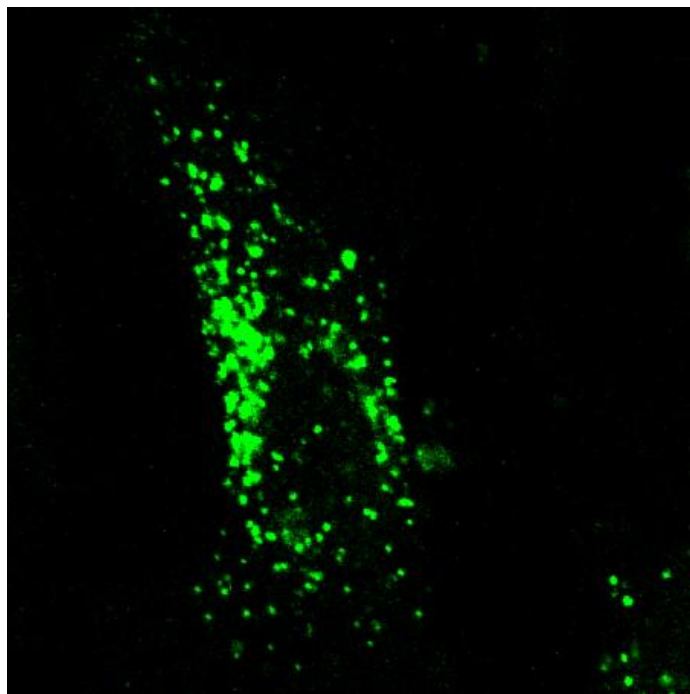


Organelle Markers

- A subset of TrueORF, genome wide tagged cDNA clones
- Encode organelle-specific proteins
- Tagged (N- or C-terminal) with turboGFP or turboRFP
- Label organelles without antibody or chemical treatment
- Perfect for study of localization and trafficking
- Delivered as 10ug transfection-ready plasmid
- Individually validated via transfection and confocal microscopy.



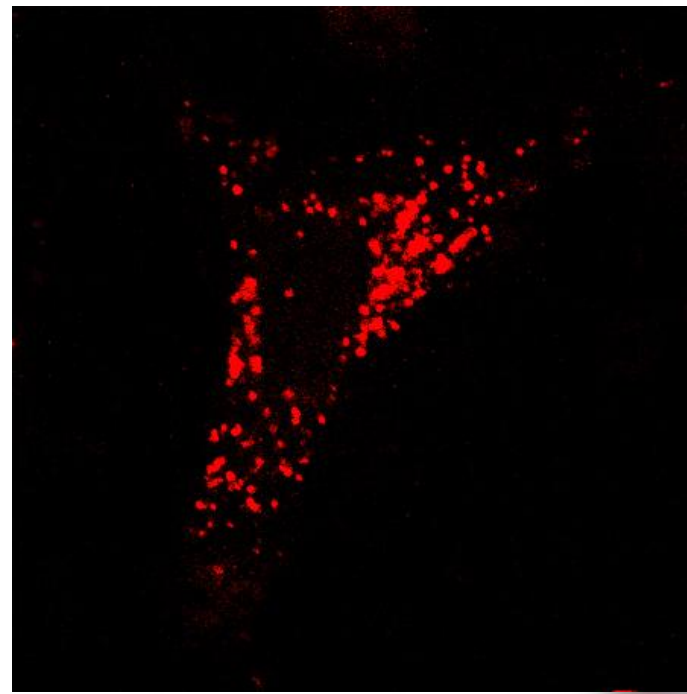
Cellular Organelle Markers



Early Endosome

(RAB5-N-GFP)

Cat# RC100026



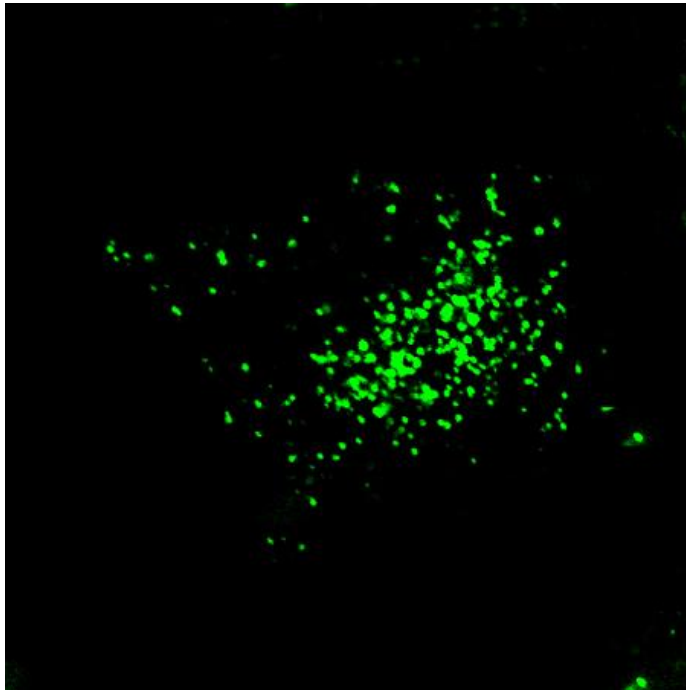
Early Endosome

(RAB5-N-RFP)

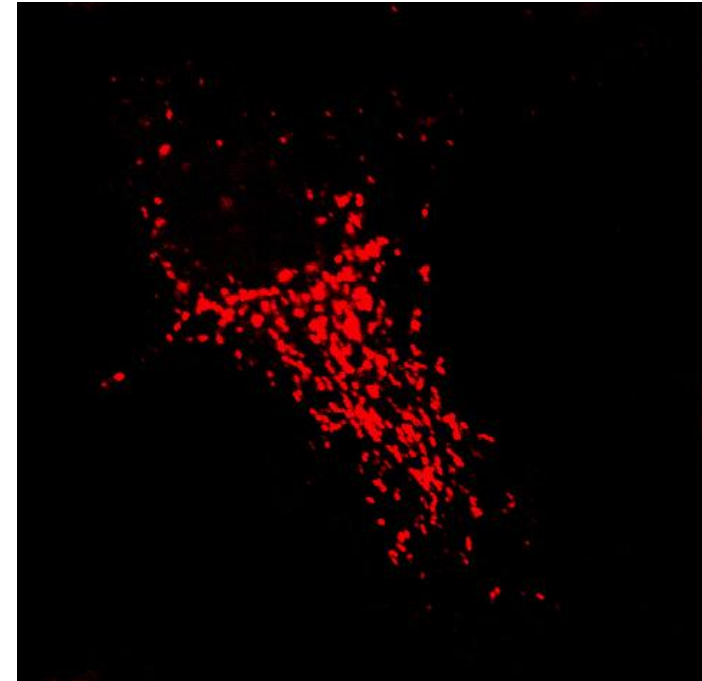
Cat# RC100058

Rab5 NM_004162

Cellular Organelle Markers



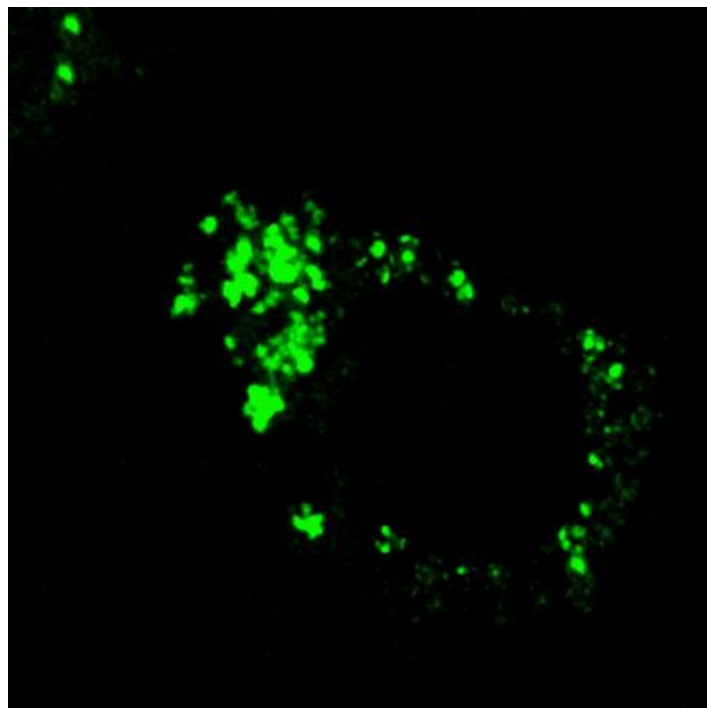
Retrograde transport Endosome
(RAB4-N-GFP)
Cat# RC100025



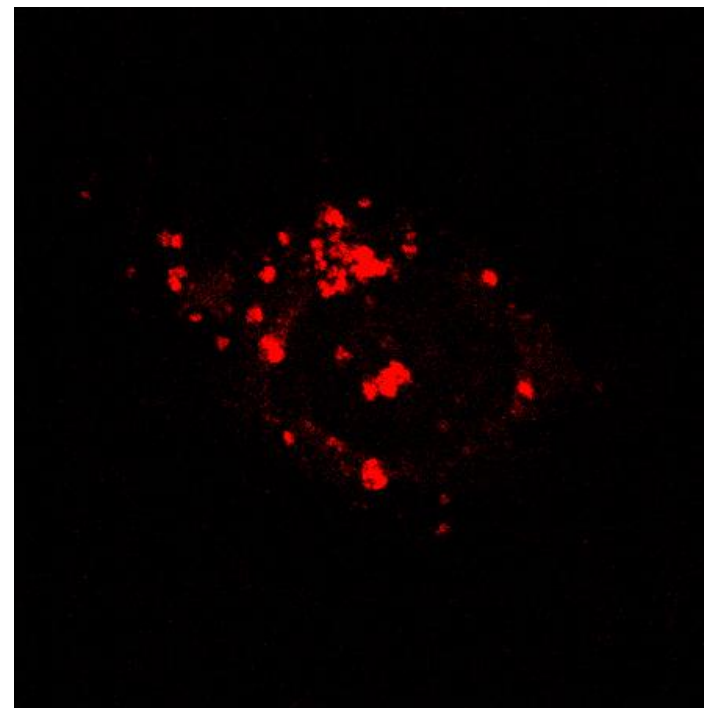
Retrograde transport Endosome
(RAB4-N-RFP)
Cat# RC100057

Rab4 NM_004578

Cellular Organelle Markers



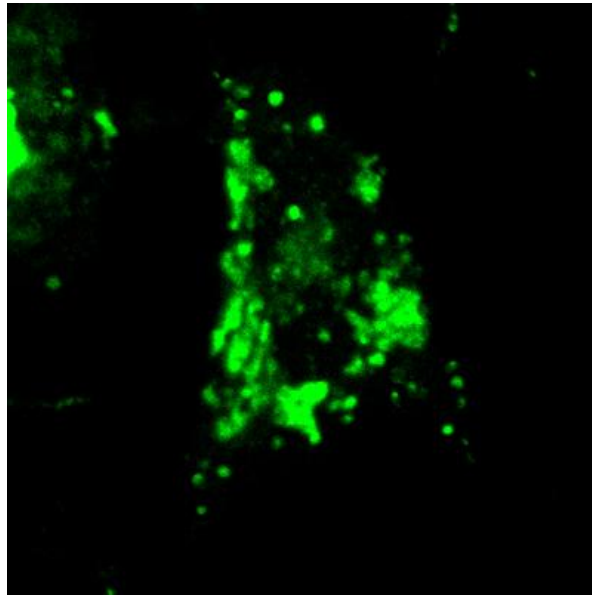
Early Endosome
(RHOB-N-GFP)
Cat# RC100027



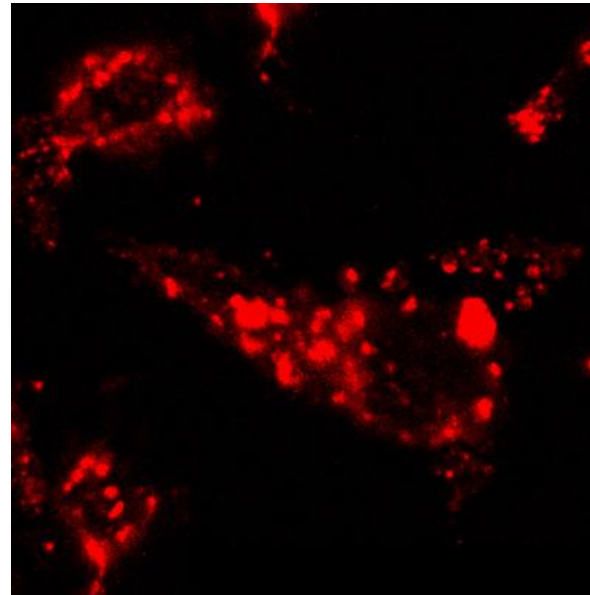
Early Endosome
(RHOB-N-RFP)
Cat# RC100059

RhoB NM_004040

Cellular Organelle Markers



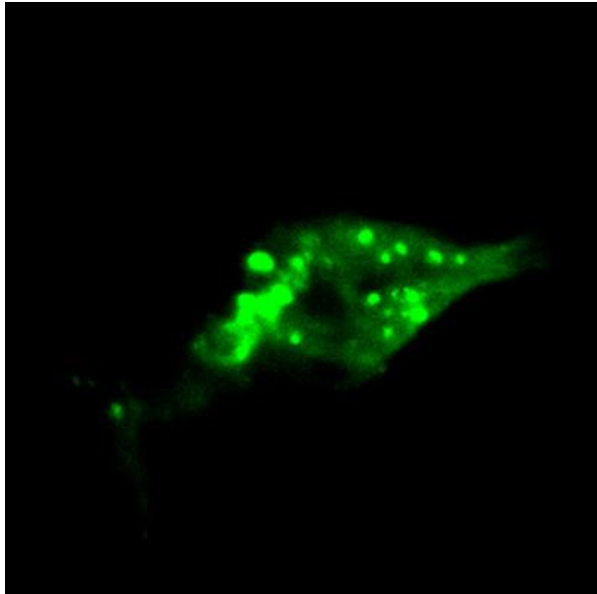
Lysosome
(LAMP1-C-GFP)
Cat# RC100016



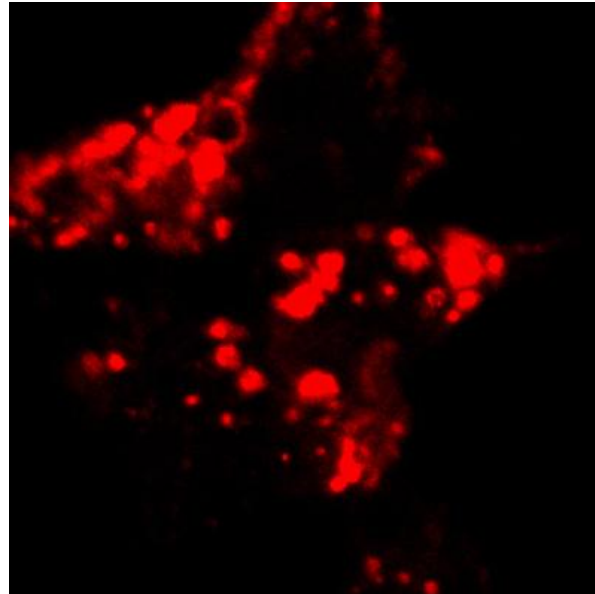
Lysosome
(LAMP1-C-RFP)
Cat# RC100048

Lamp1 NM_005561

Cellular Organelle Marker

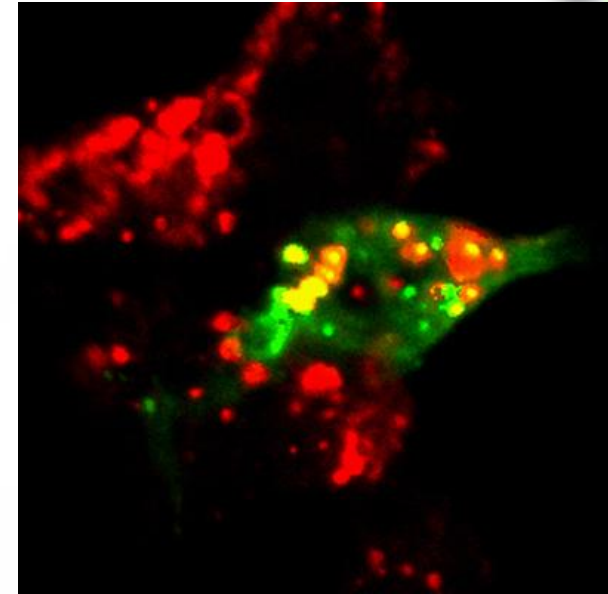


Autophagosome
(MAP1LC3B-C-RFP)



Lysosome
(LAMP1-N-GFP)

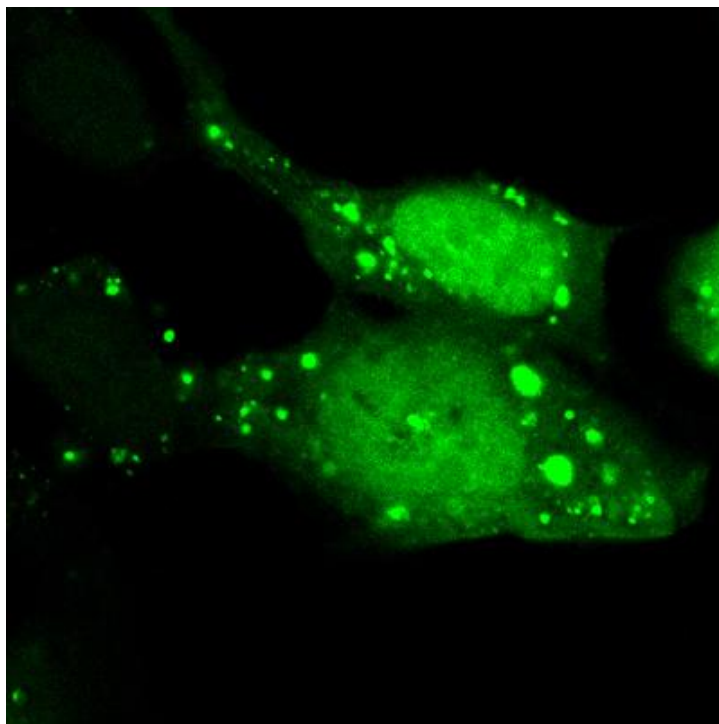
Lamp1 NM_005561



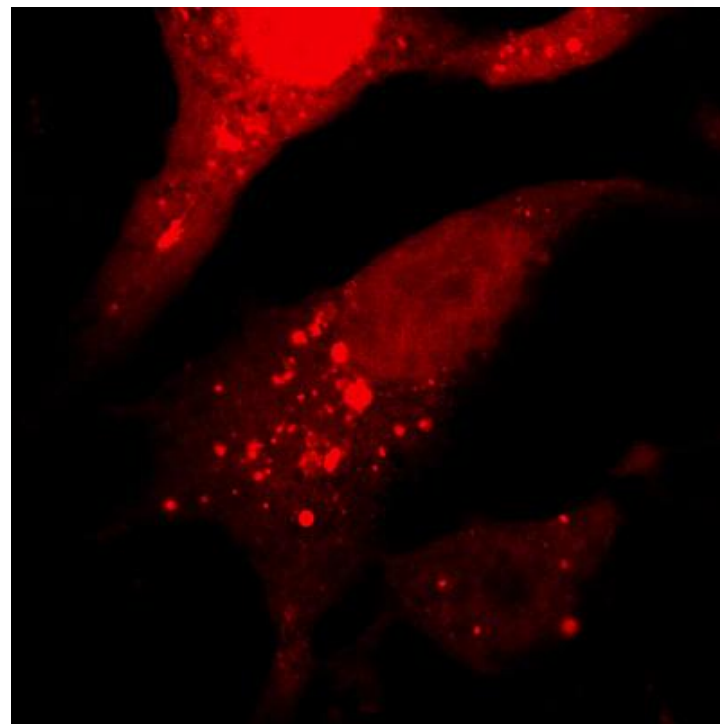
Merged
(RFP + GFP,
Yellow indicates
Co-localization regions)

Lysosome-autophagosome co-localization

Cellular Organelle Marker



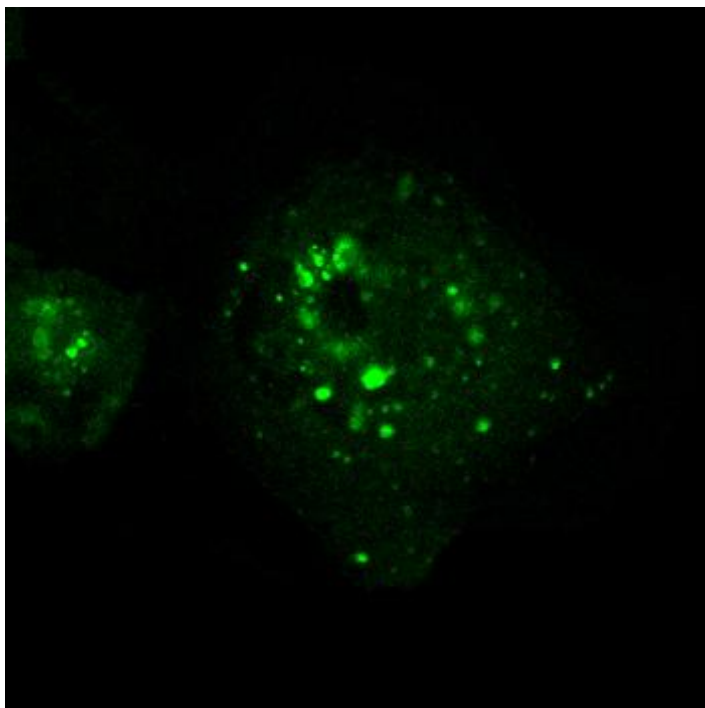
Autophagasome
(MAP1LC3B-N-GFP)
Cat# RC100021



Autophagasome
(MAP1LC3B-N-RFP)
Cat# RC100053

MAP1LC3B NM_022818

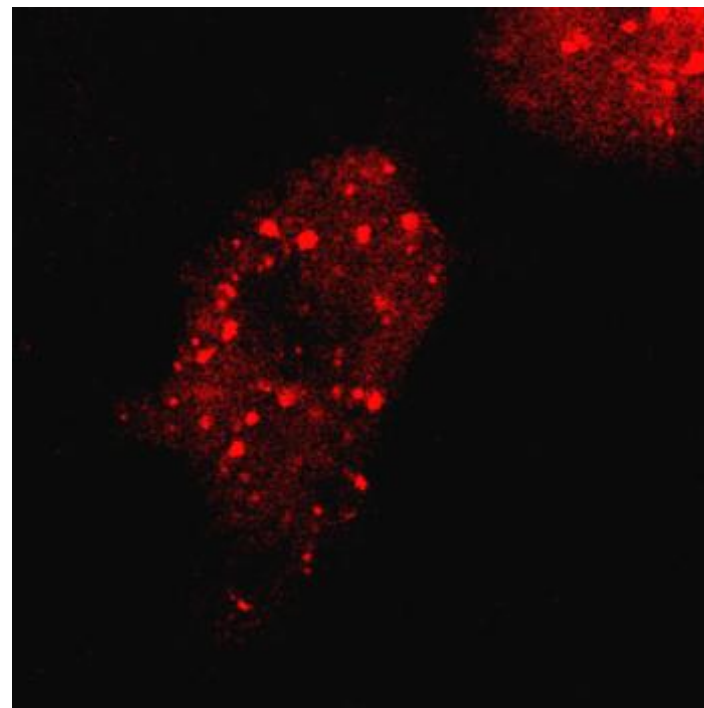
Cellular Organelle Marker



Autophagasome

(DIRAS3-N-GFP)

Cat# RC100011



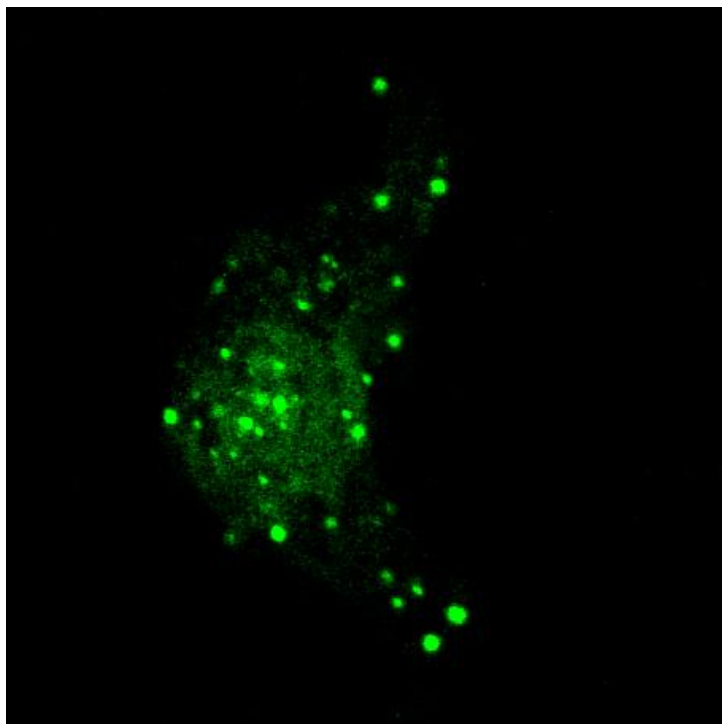
Autophagasome

(DIRAS3-N-RFP)

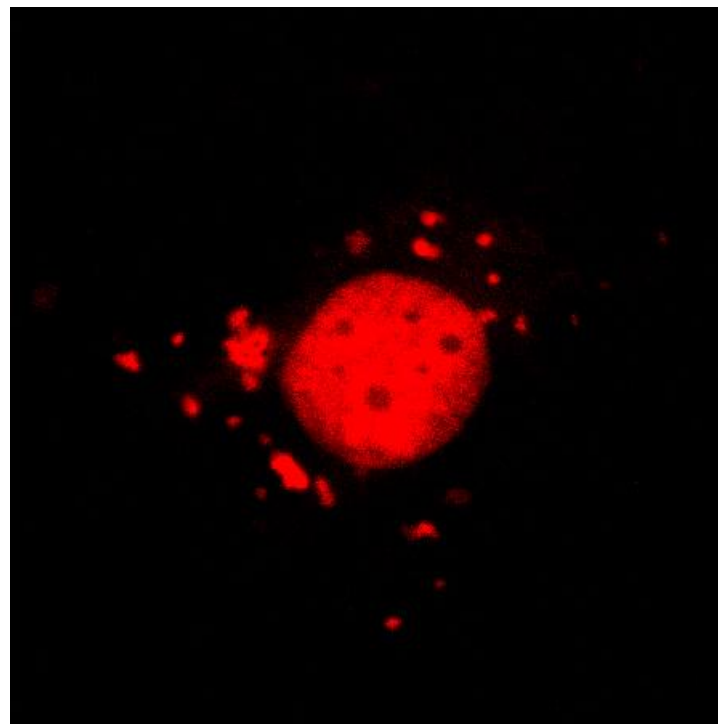
Cat# RC100043

DIRAS3 NM_004675

Cellular Organelle Marker



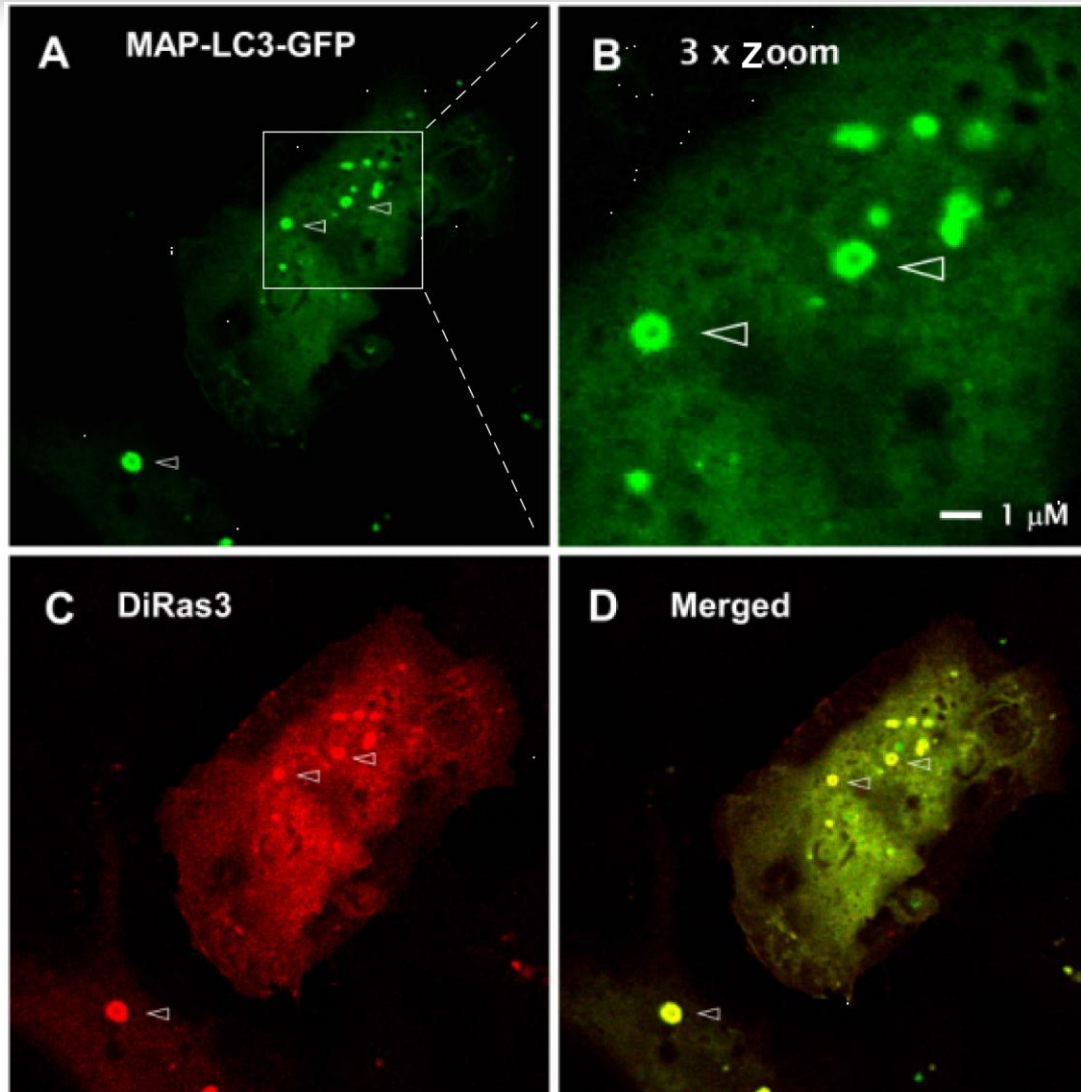
Autophagasome
(MAP1LC3A-N-GFP)
Cat# RC100020



Autophagasome
(MAP1LC3A-N-RFP)
Cat# RC100052

MAP1LC3A NM_032514

Cellular Organelle Markers

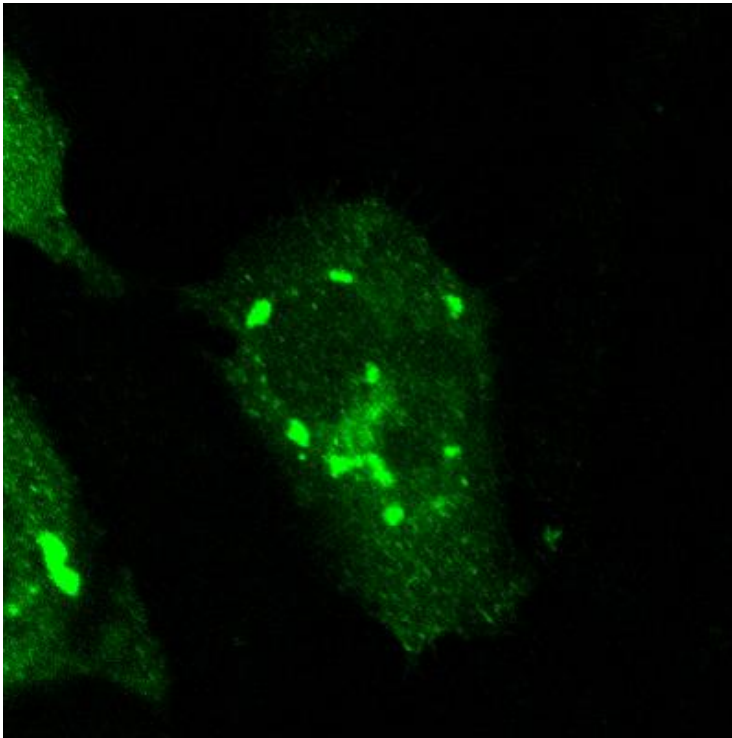


**Autophagosome
co-localized with
an autophagy-
inducer DiRas3**

DiRas3-N-GPF: RC100011
DiRas3-N-RFP: RC100043

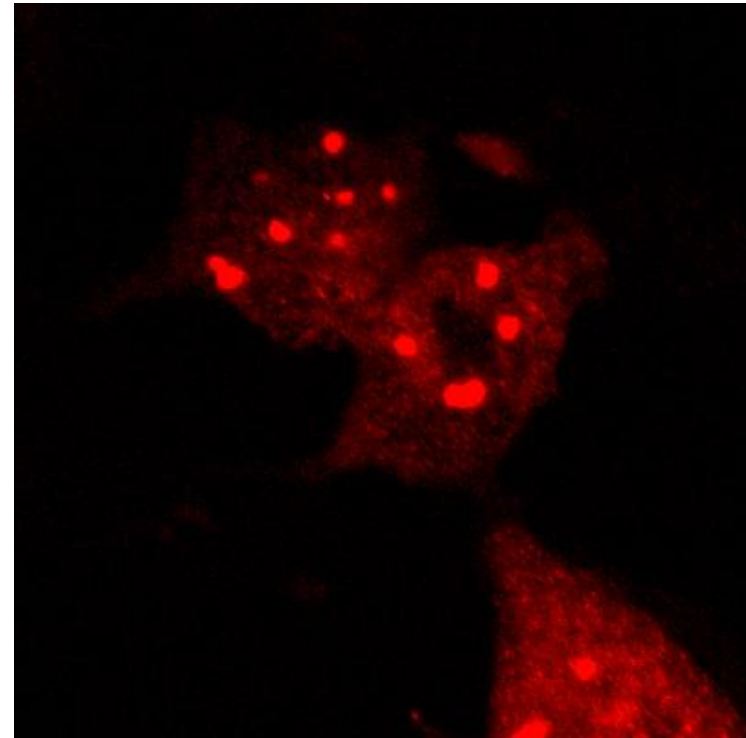
Autophagosome-autophagy Inducer co-localization

Autophagy Related Proteins



Autophagosome

(ATG12-C-GFP)
Cat# RC100004

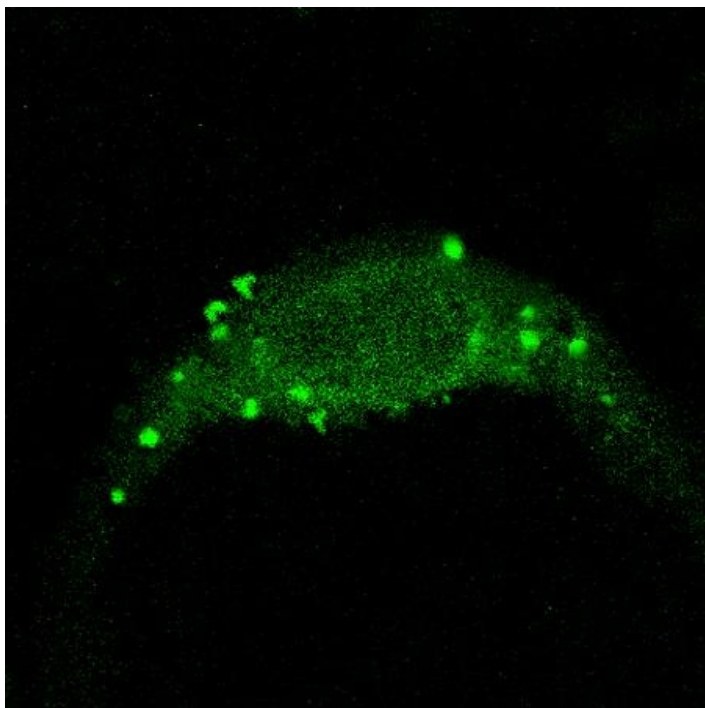


Autophagosome

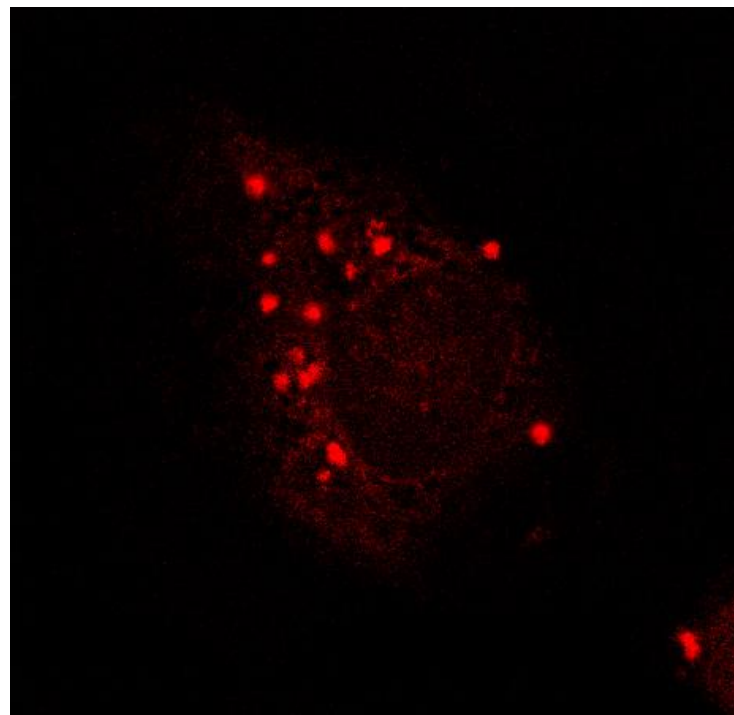
(ATG12-C-RFP)
Cat# RC1000036

ATG12 NM_004707

Cellular Organelle Markers



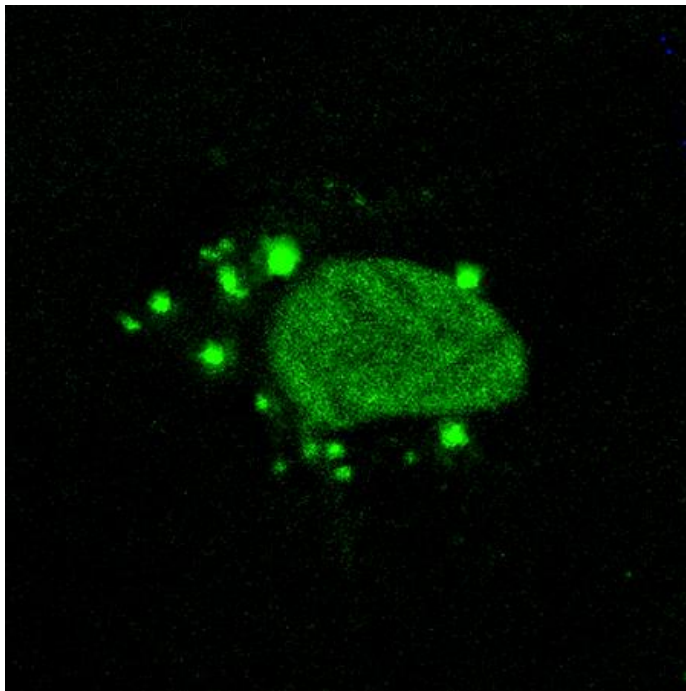
Autophagosome
(ATG5-C-GFP)



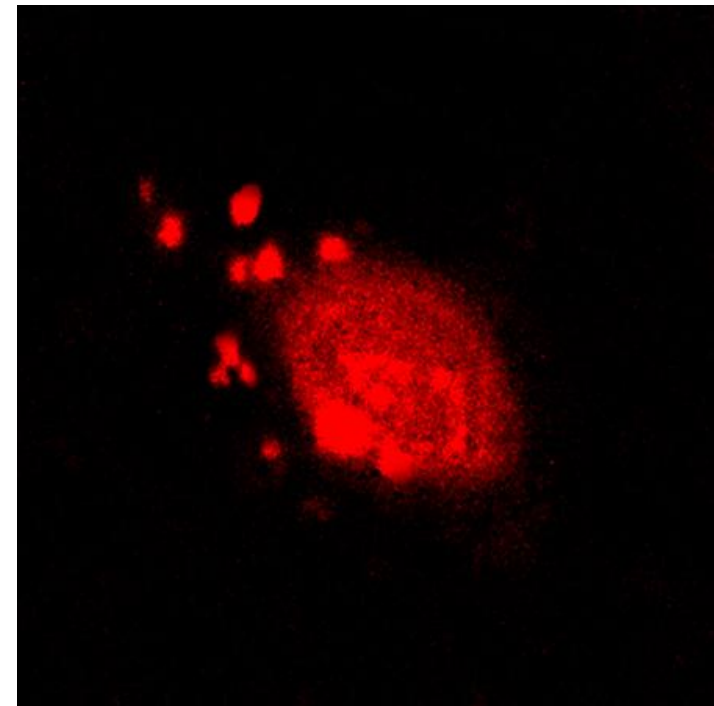
Autophagosome
(ATG5-C-RFP)

ATG5 NM_004849

Cellular Organelle Markers



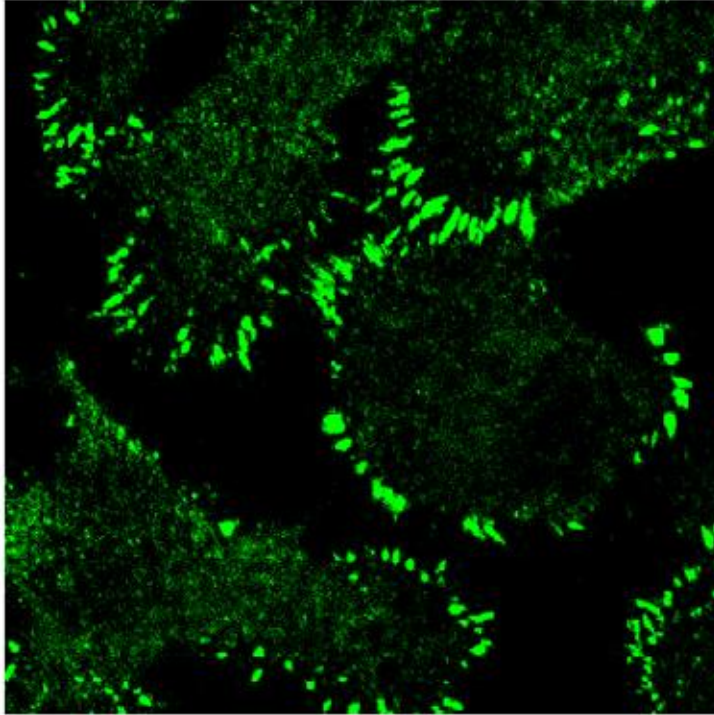
Autophagosome
(ATG9-C-GFP)



Autophagosome
(ATG9-C-RFP)

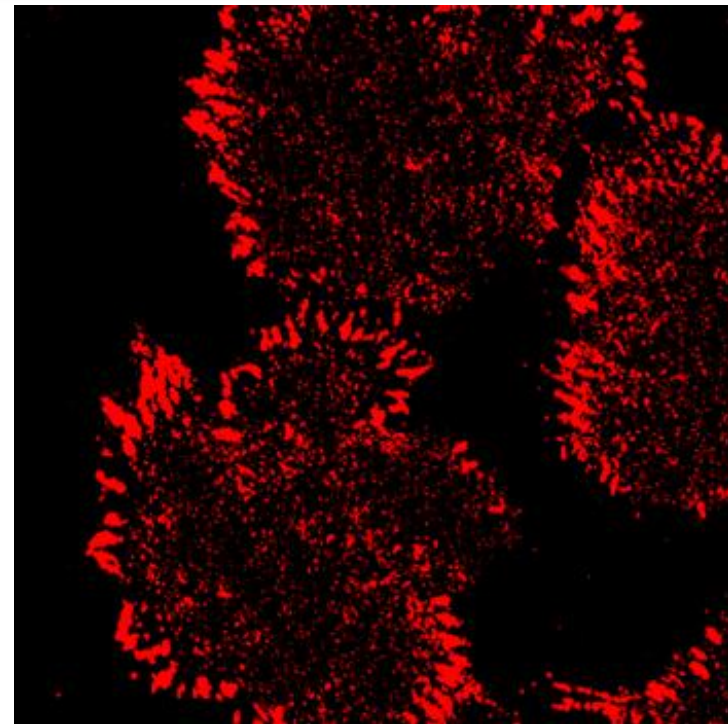
ATG9 NM_024085

Cellular Organelle Markers



Focal Adhesion Fibers

(FAK-N-GFP)
Cat# RC100012



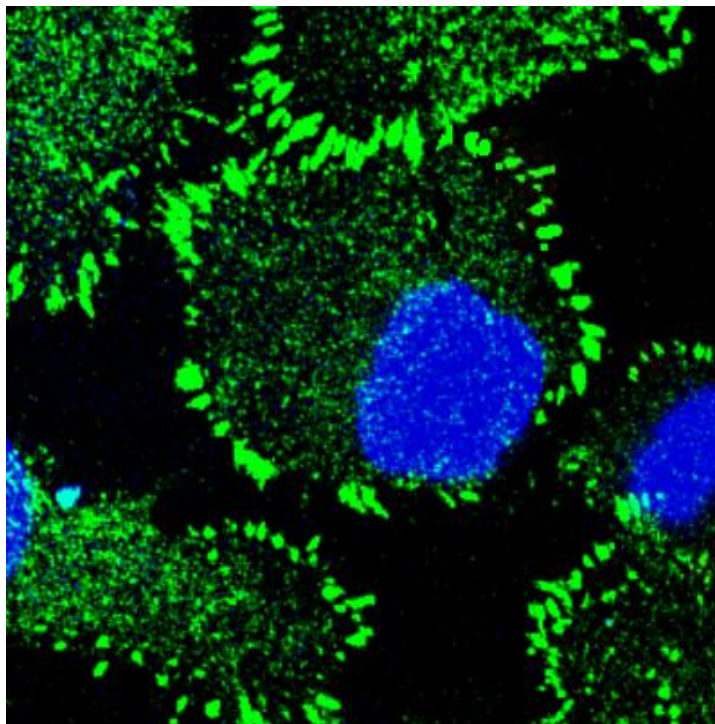
Focal Adhesion Fibers

(FAK-N-RFP)
Cat# RC100044

FAK NM_153831

(Cultured in Fibronectin coated plates)

Cellular Organelle Markers



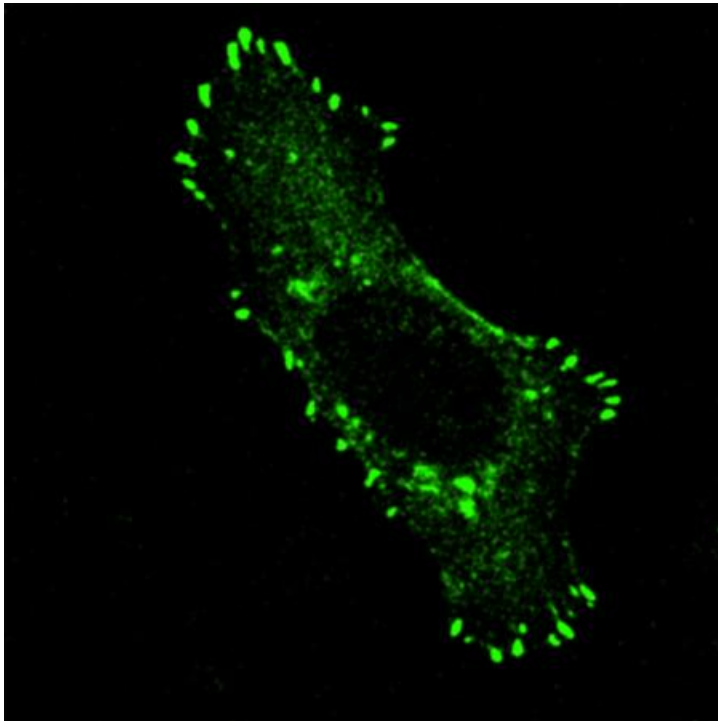
Focal Adhesion Kinase (FAK)

(FAK-N-GFP) Cat# RC100012

Nuclei stained with DAPI

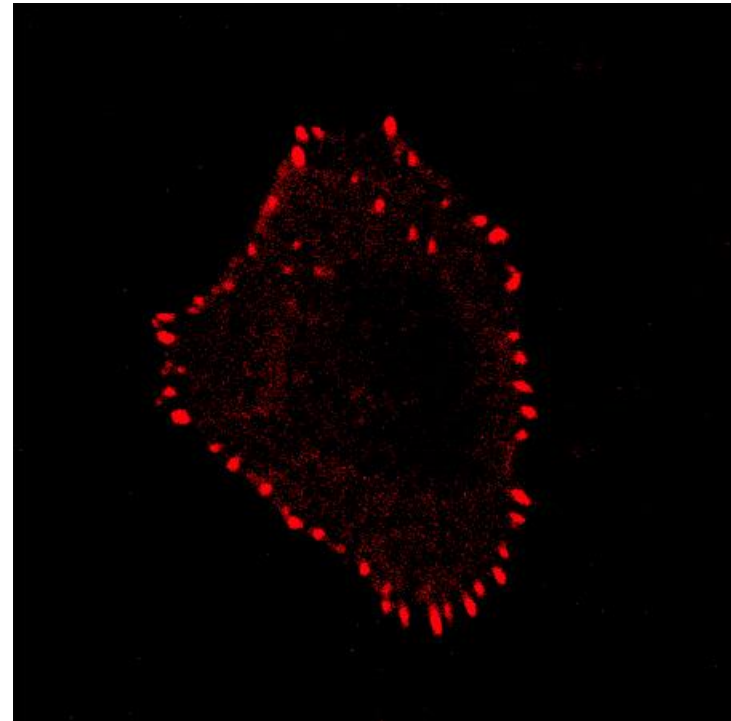
FAK NM_153831

Cellular Organelle Markers



Focal Adhesion Fibers

(ZYX-N-GFP)
Cat# RC100032

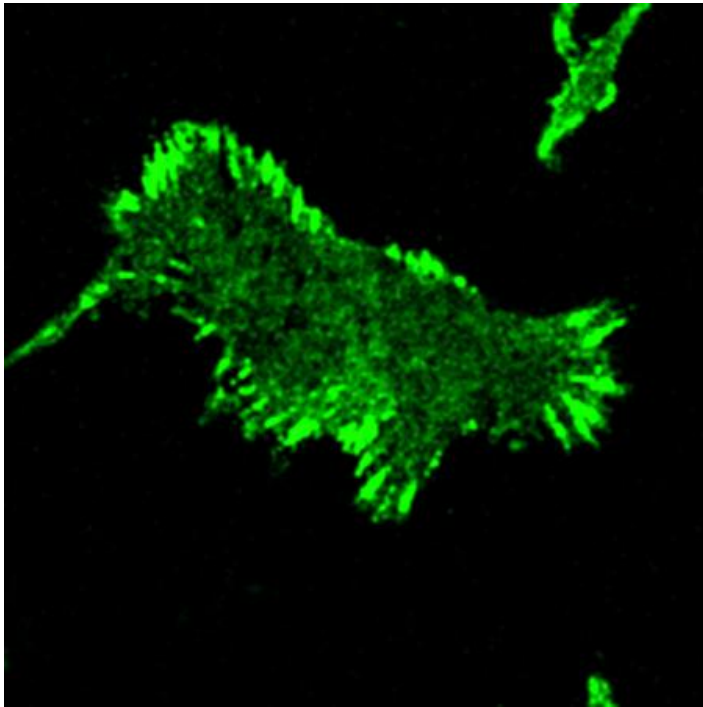


Focal Adhesion Fibers

(ZYX-N-RFP)
Cat# RC100064

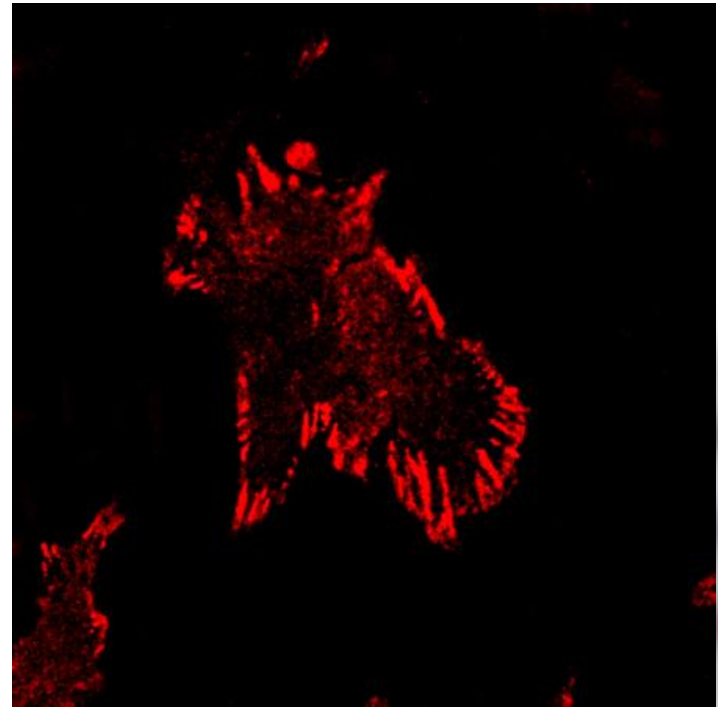
Zyxin1 NM_003461

Cellular Organelle Markers



Focal Adhesion Fibers

(VCL-N-GFP)
Cat# RC100031

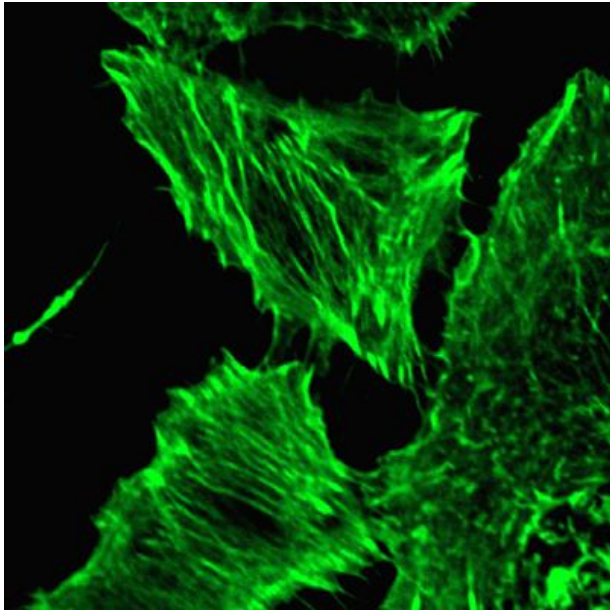


Focal Adhesion Fibers

(VCL-N-RFP)
Cat# RC100063

Vinculin NM_003373

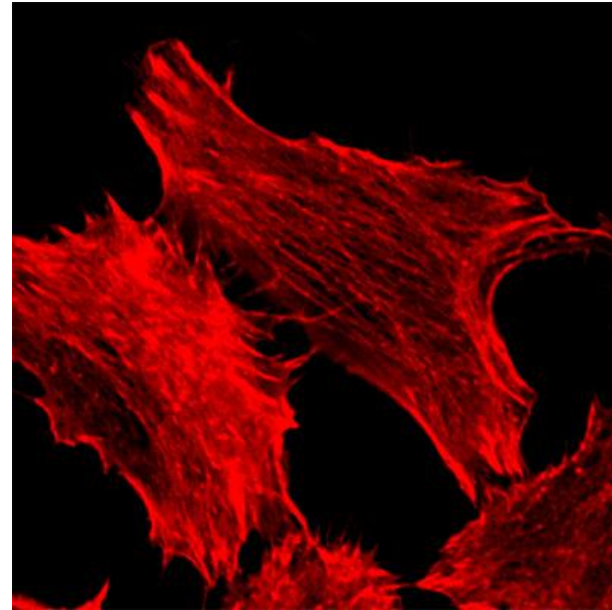
Cytoskeleton Markers



Actin Stress Fibers

(ACTB-N-GFP)

Cat# RC100002



Actin Stress Fibers

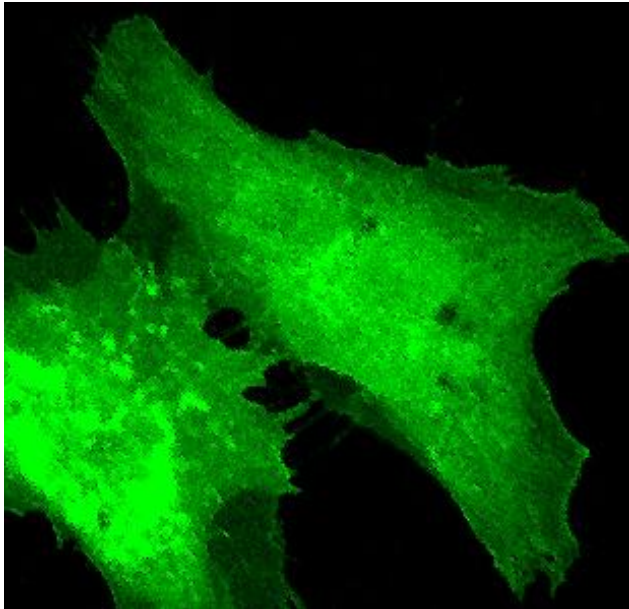
(ACTB-N-RFP)

Cat# RC100034

ActinB NM_001101

(Stimulated with activated RhoA)

Cytoskeleton Markers

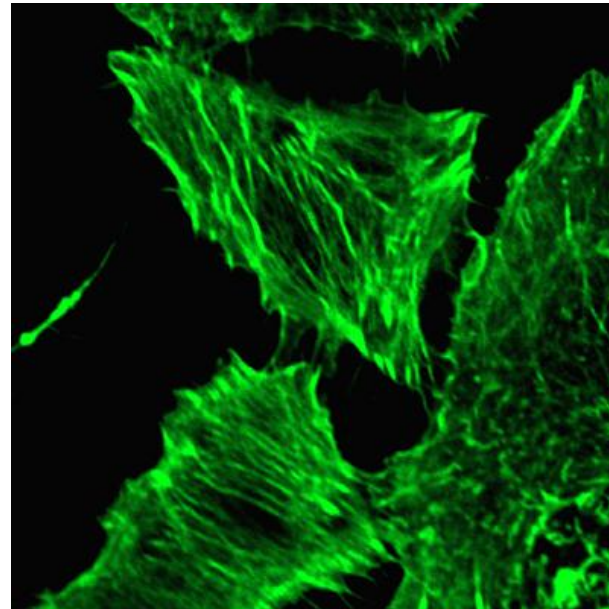


No Stress Fibers

(ACTB-N-GFP)
Cat# RC100002

Activated RhoA
Stimulation

-



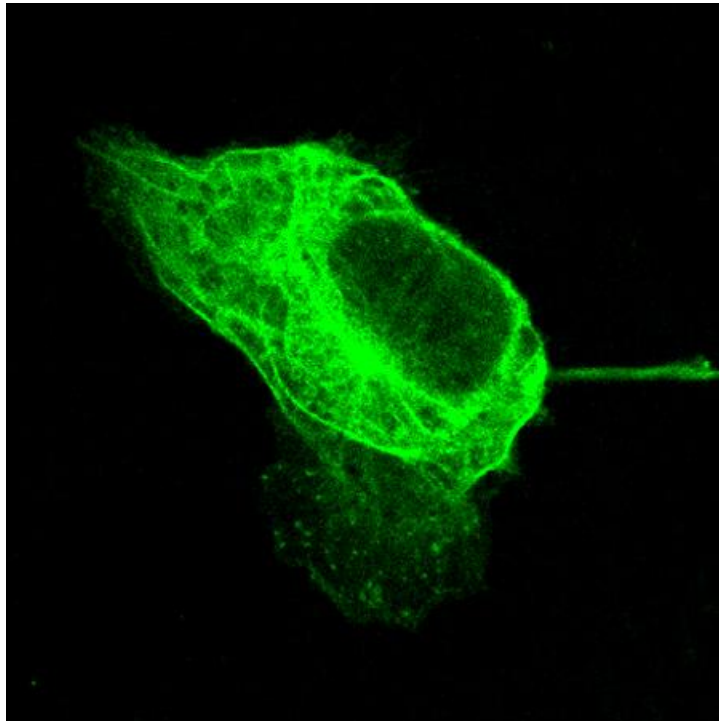
Actin Stress Fibers

(ACTB-N-GFP)
Cat# RC100002

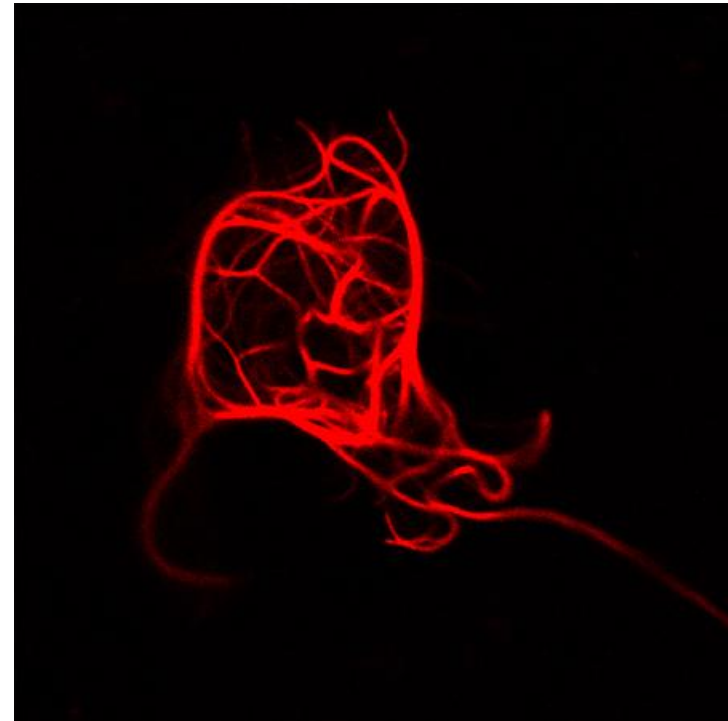
+

ActinB NM_001101

Cytoskeleton Markers



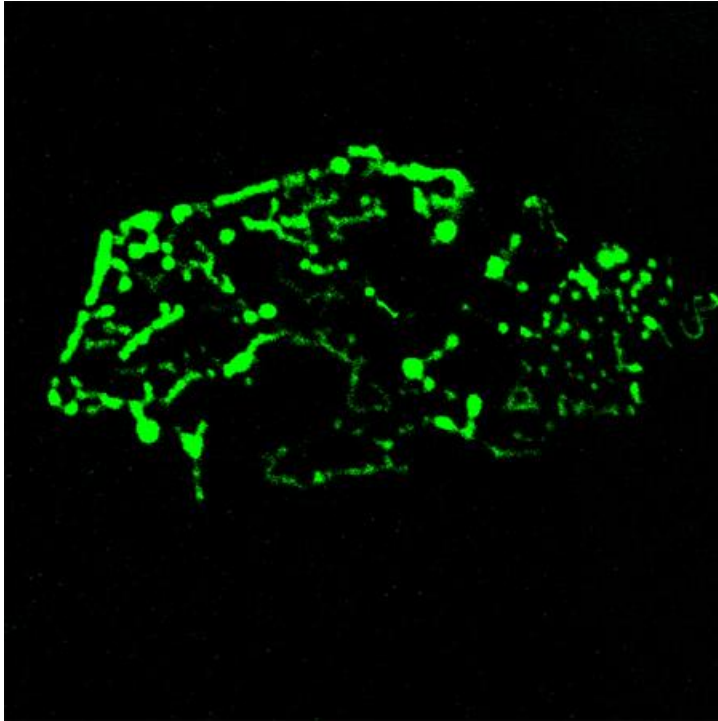
cytoskeleton
(MAPRE3-C-GFP)
Cat# RC100019



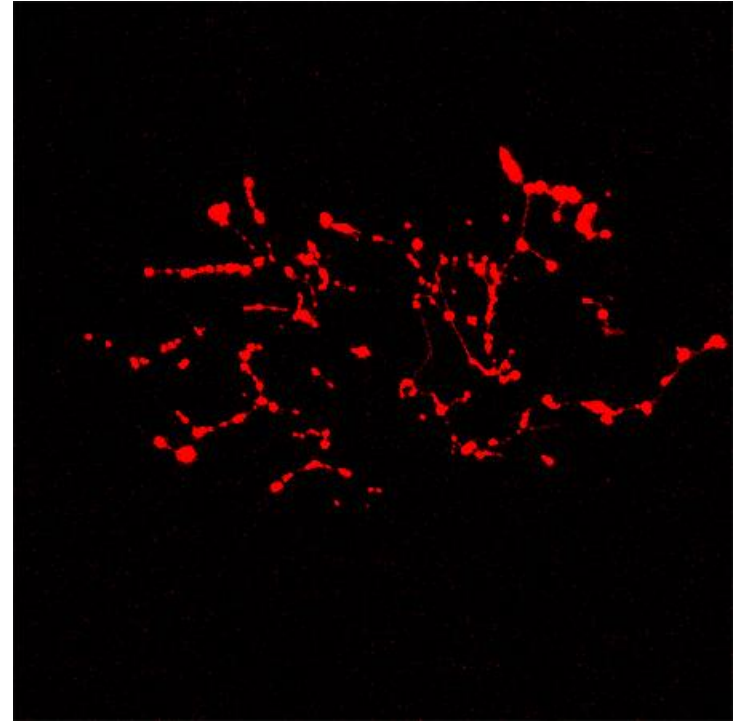
cytoskeleton
(MAPRE3-C-RFP)
Cat# RC100051

MAPRE3 NM_012326

Cytoskeleton Markers



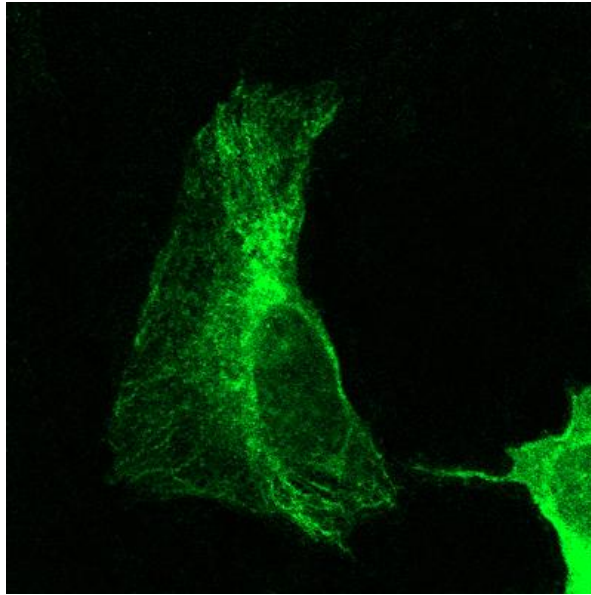
Cytoskeleton
(PFN1-N-GFP)
Cat# RC100022



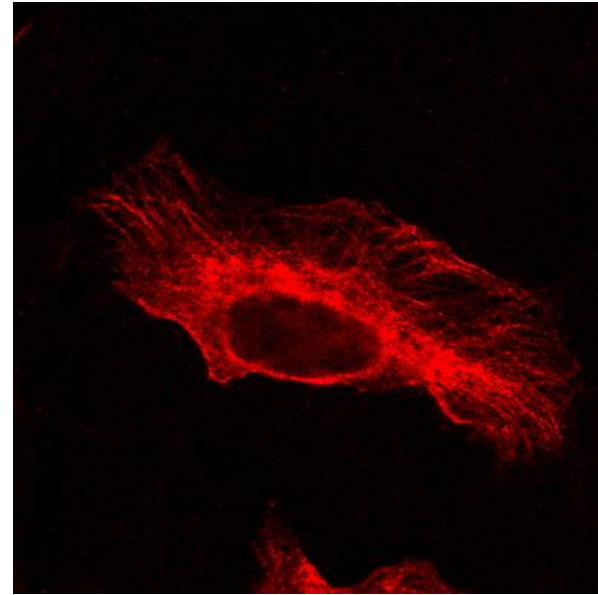
Cytoskeleton
(PFN1-N-RFP)
Cat# RC100054

PFN1 NM_005022

Cytoskeleton Markers



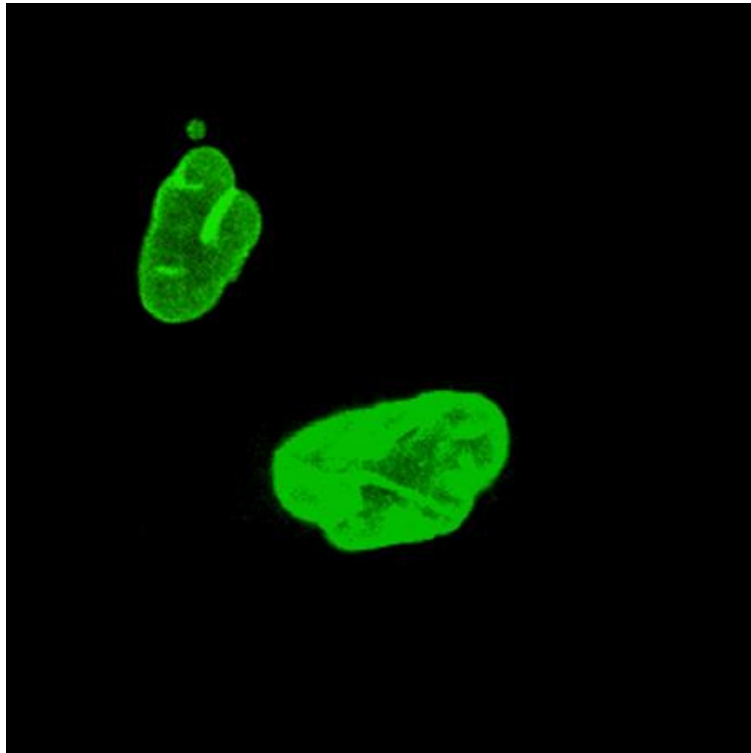
Cytoskeleton
(TUBA1B-N-GFP)
Cat# RC100030



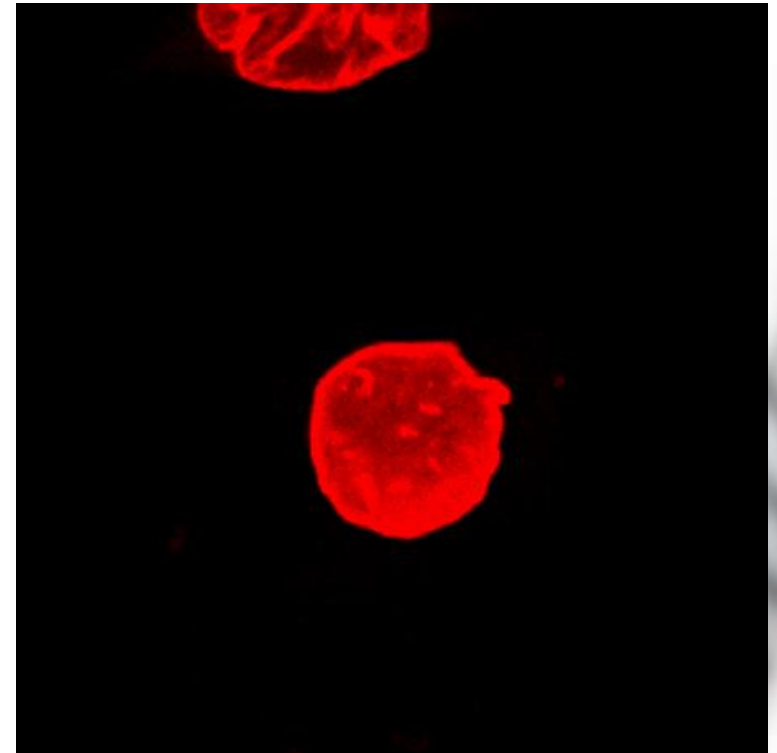
Cytoskeleton
(TUBA1B-N-RFP)
Cat# RC100062

TubulinA1B NM_006082

Nuclear Proteins



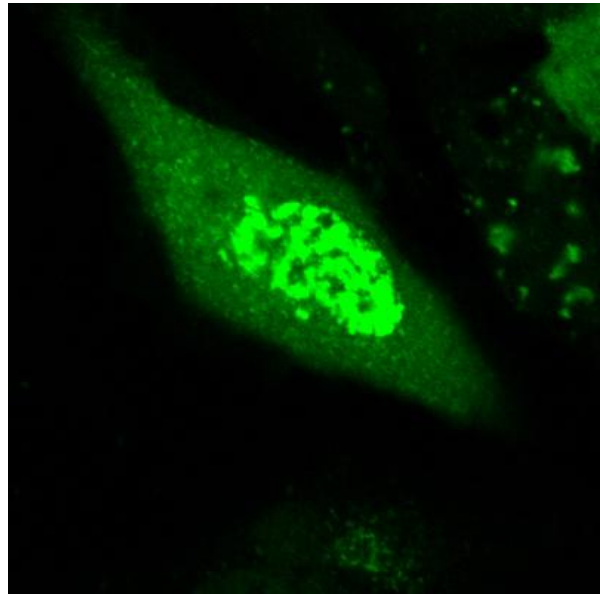
Nucleus
(LMNB1-N-GFP)
Cat# RC100018



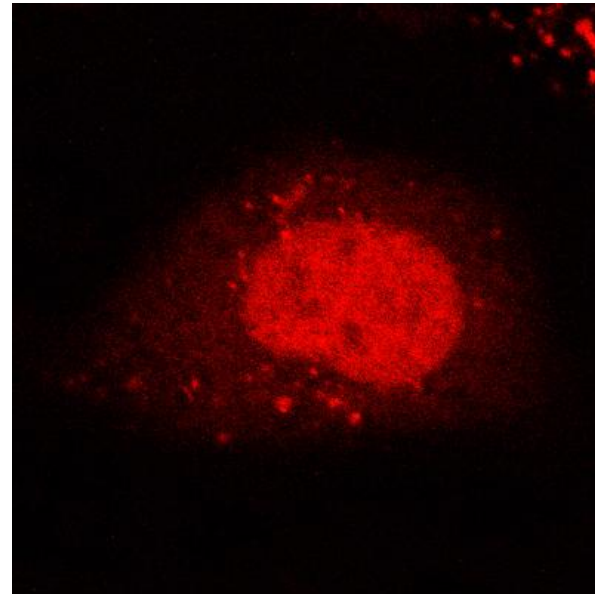
Nucleus
(LMNB1-N-RFP)
Cat# RC100050

LaminB1 NM_005573

Nuclear Proteins



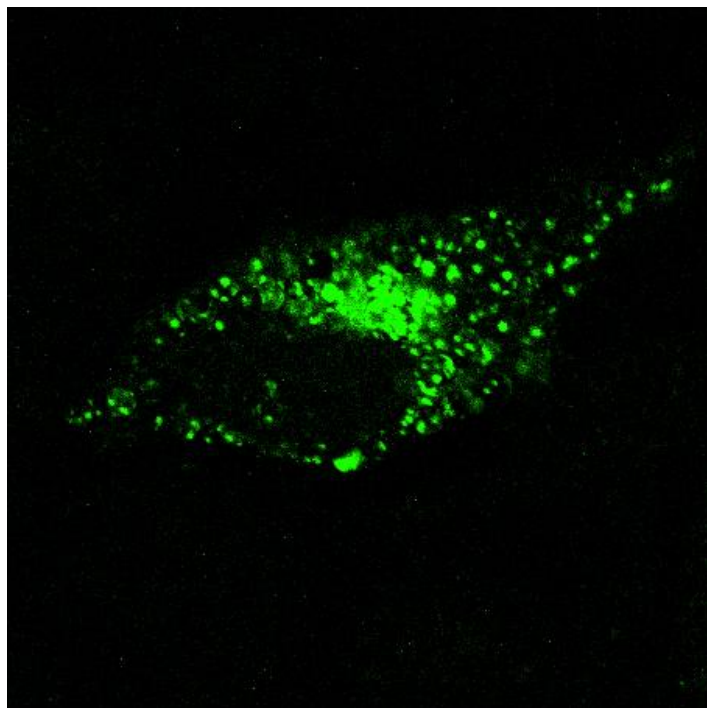
Nucleus
(CCND1-C-GFP)
Cat# RC100009



Nucleus
(CCND1-C-RFP)
Cat# RC100041

Cyclin D1 NM_053056

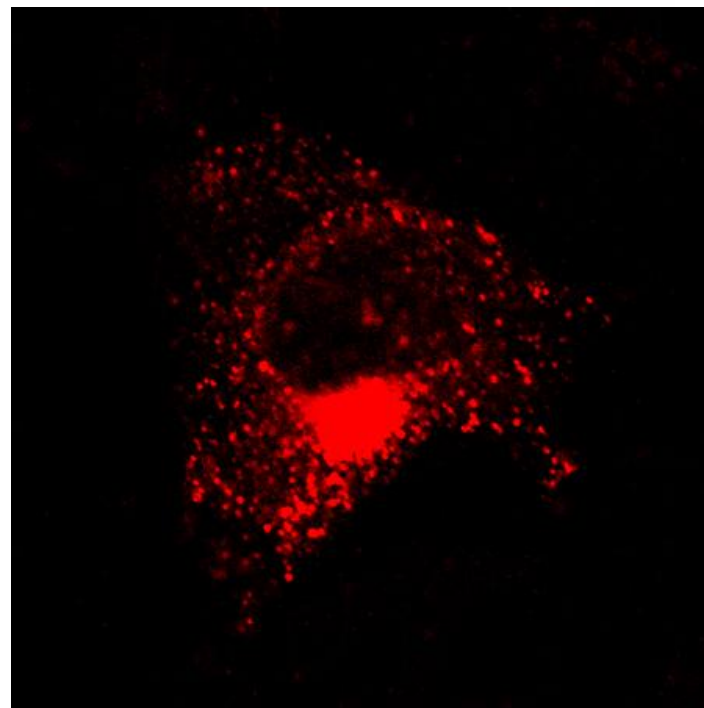
Cellular Organelle Markers



Golgi Apparatus

(B4GALT1-C-GFP)

Cat# RC100005



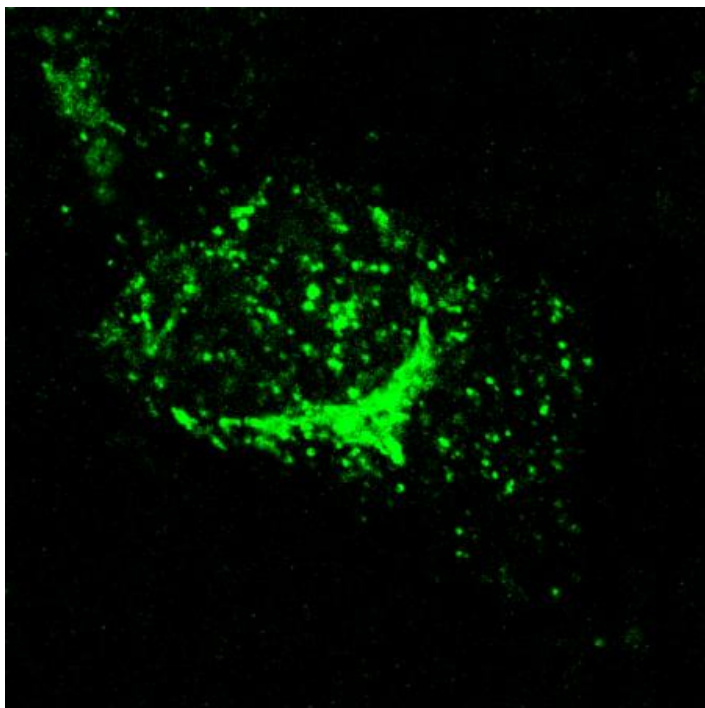
Golgi Apparatus

(B4GALT1-C-RFP)

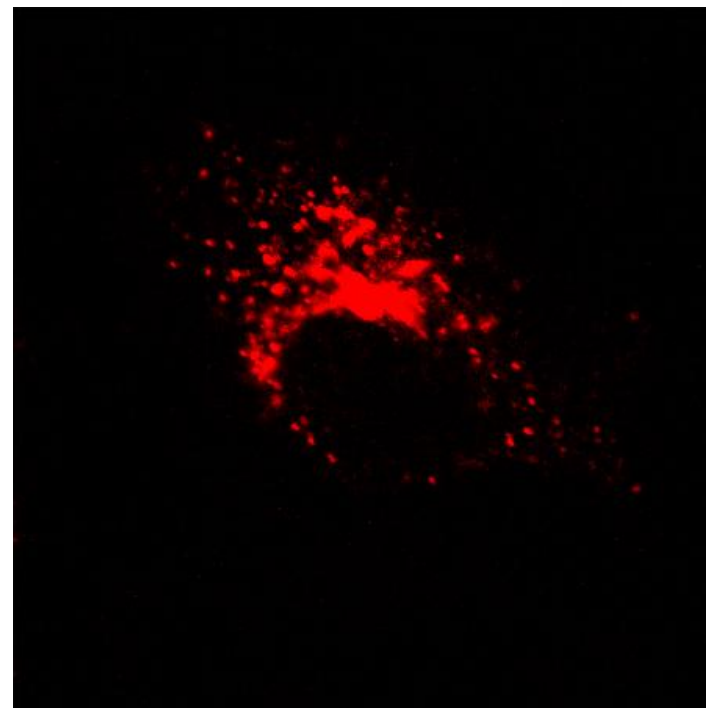
Cat# RC100037

B4GalT1 NM_001497

Cellular Organelle Markers



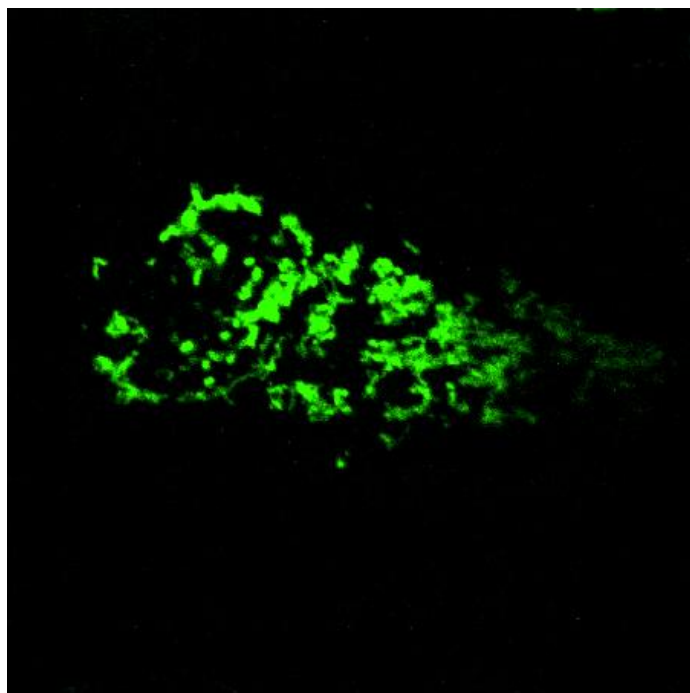
Golgi Apparatus
(TGOLN-C-GFP)
Cat# RC100029



Golgi Apparatus
(TGOLN-C-RFP)
Cat# RC100061

TGOLN NM_006464

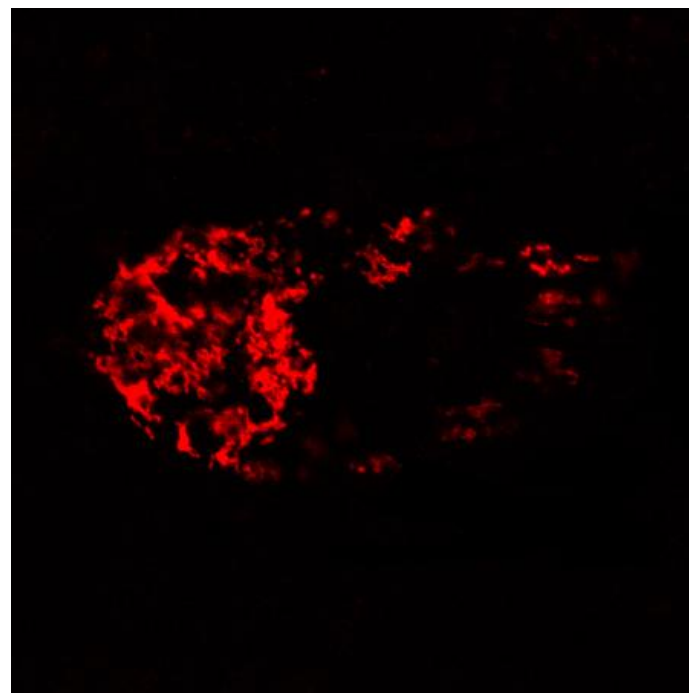
Cellular Organelle Markers



Mitochondria

(**BID-C-GFP**)

Cat# RC100007



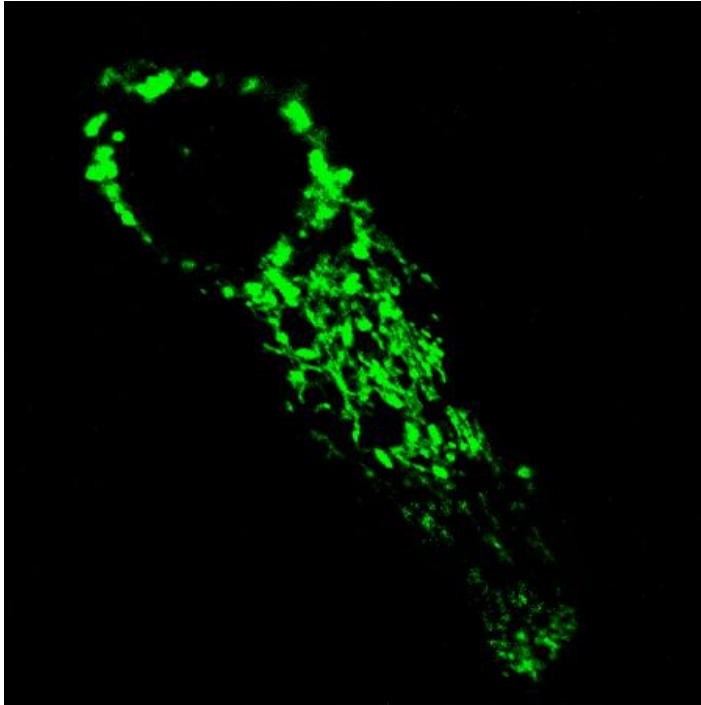
Mitochondria

(**BID-C-RFP**)

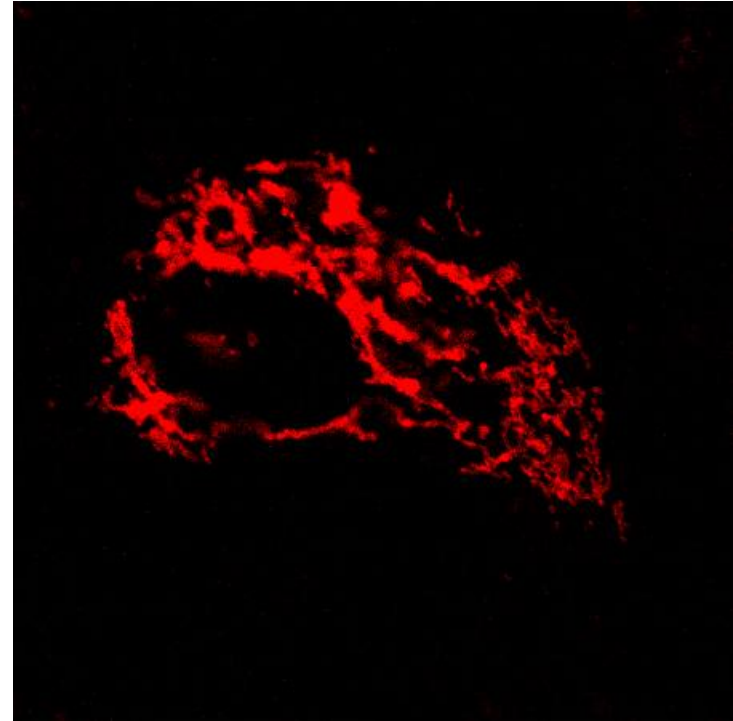
Cat# RC100039

BID NM_197966

Cellular Organelle Markers



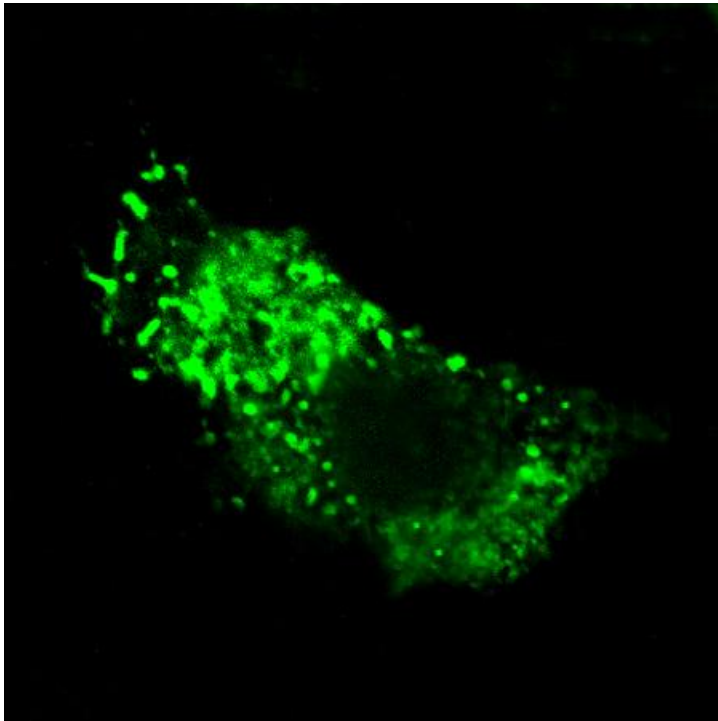
Mitochondria
(BDHA1-C-GFP)
Cat# RC100006



Mitochondria
(BDHA1-C-RFP)
Cat# RC100038

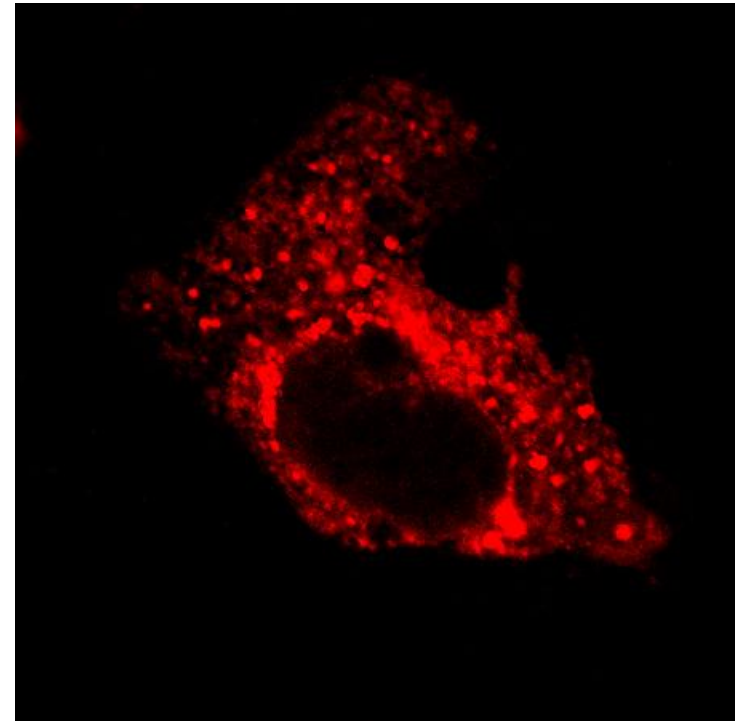
BDHA1 NM_000284

Cellular Organelle Markers



Endoplasmic reticulum

(CALR-C-GFP)
Cat# RC100008

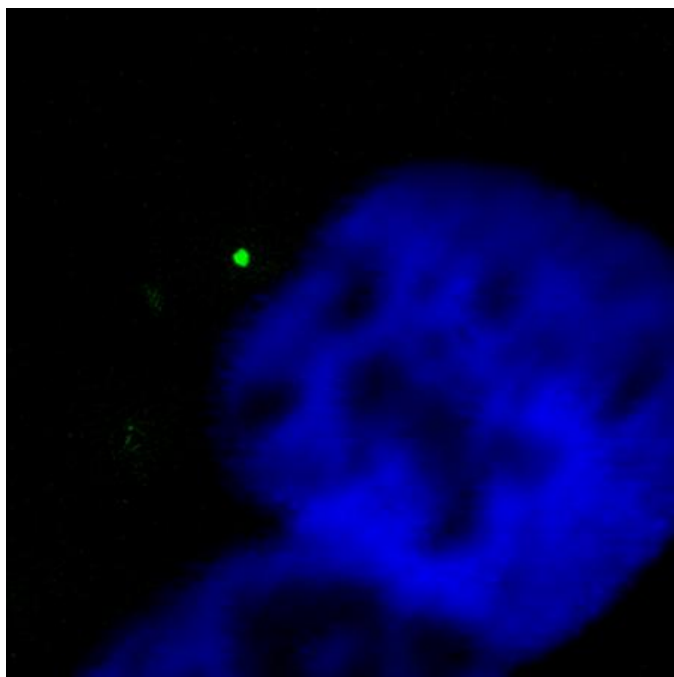


Endoplasmic reticulum

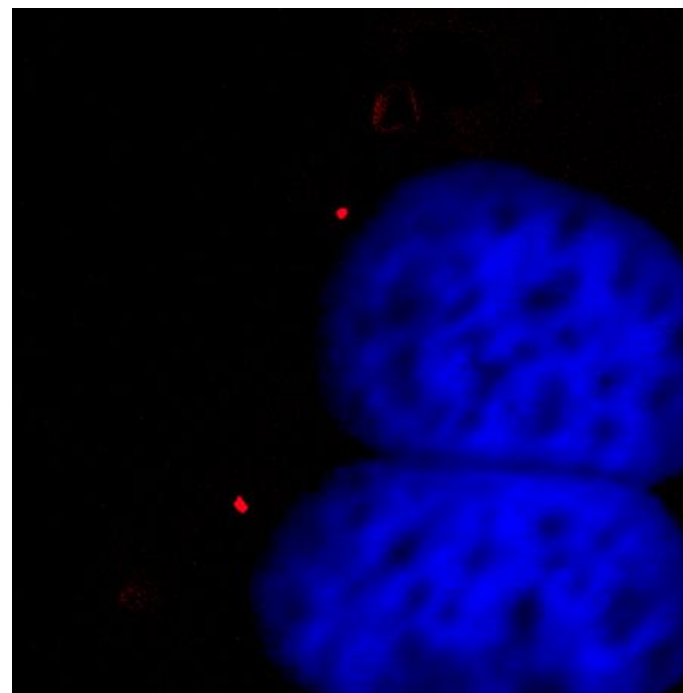
(CALR-C-RFP)
Cat# RC100040

CALR NM_004343

Cellular Organelle Markers



Centrosome
(PLK1-N-GFP)
Cat# RC100023

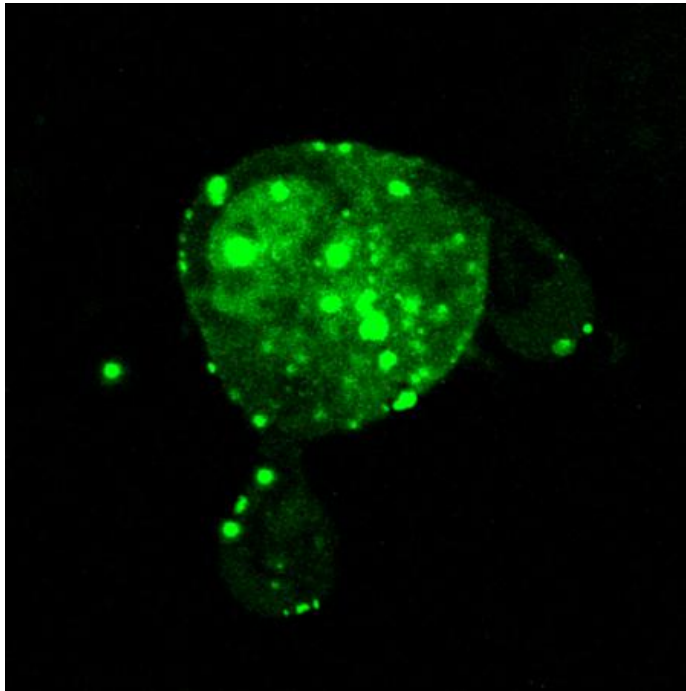


Centrosome
(PLK1-N-RFP)
Cat#RC100055

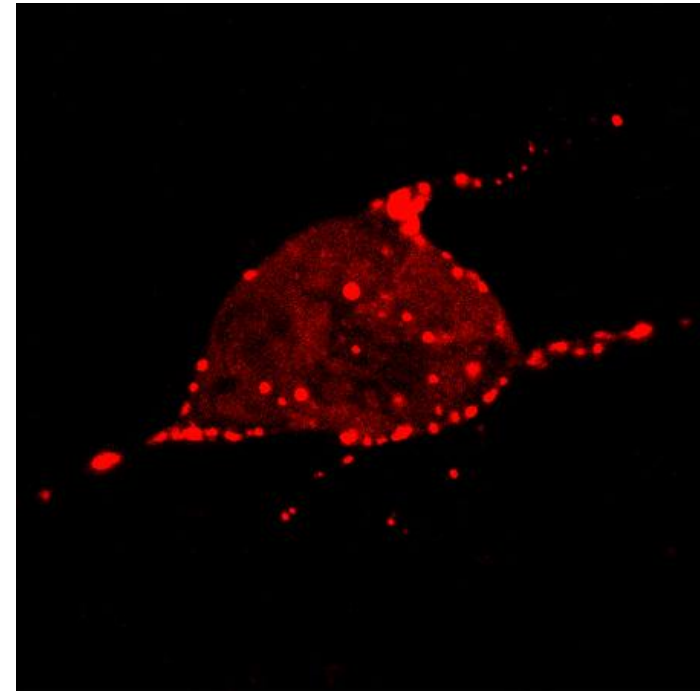
PLK1 NM_005030

(Nuclei stained with DAPI)

Cellular Organelle Markers



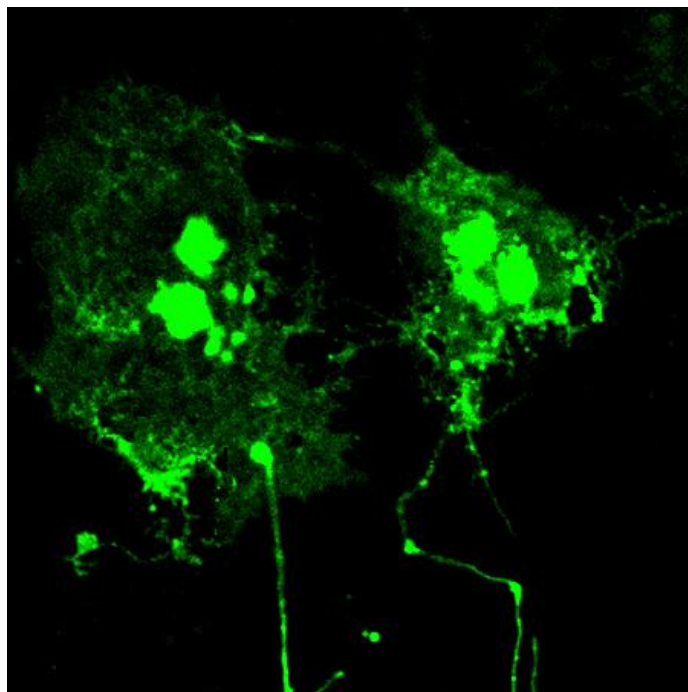
Coated Pit
(CLTB-N-GFP)
Cat# RC100010



Coated Pit
(CLTB-N-RFP)
Cat# RC100042

CLTB NM_001834

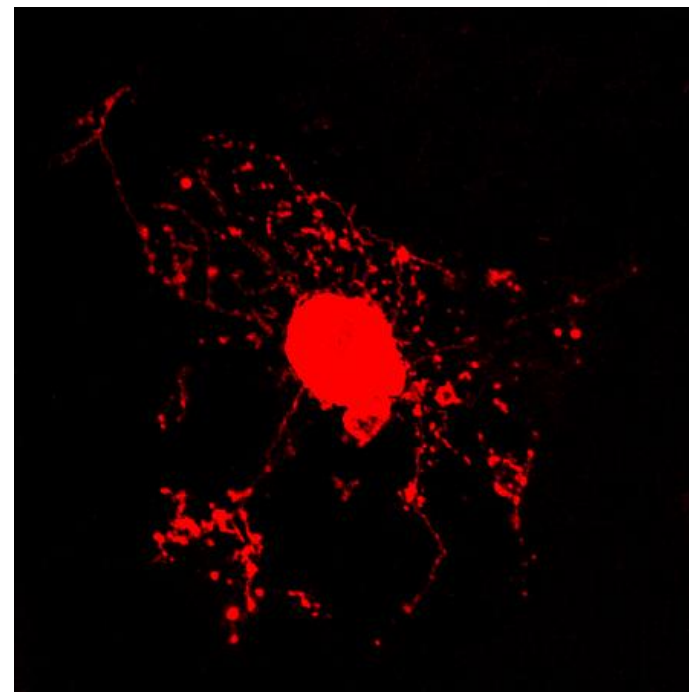
Cellular Organelle Markers



Neuronal axis

(GAP43-C-GFP)

Cat# RC100013



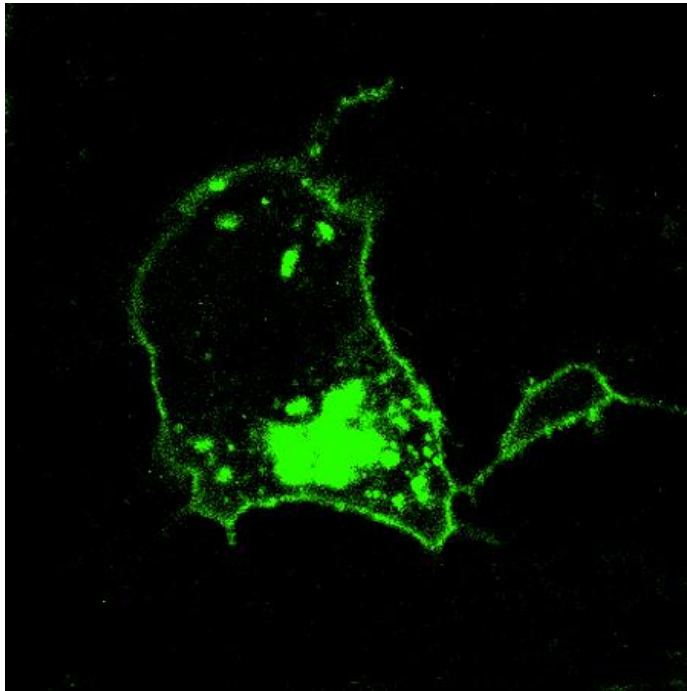
Neuronal axis

(GAP43-C-RFP)

Cat# RC100045

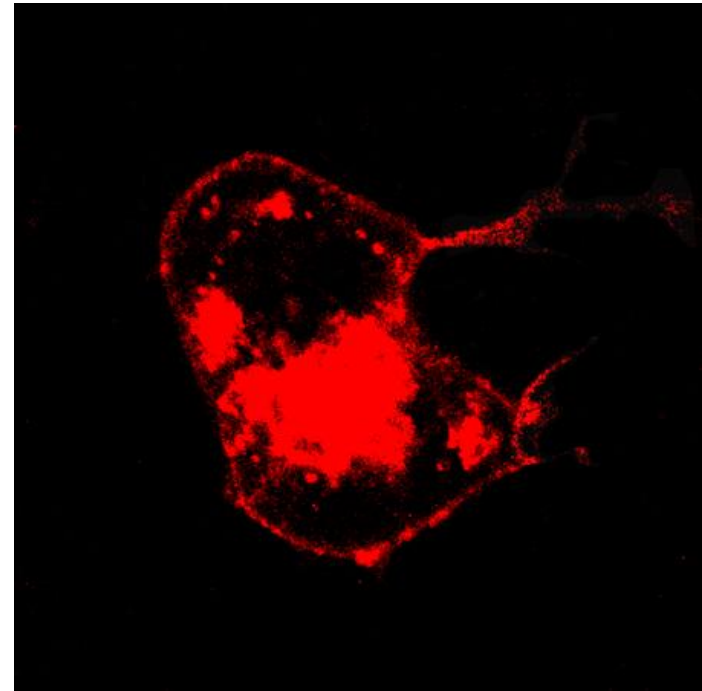
GAP43 NM_002045

Cellular Organelle Markers



Plasma membrane

(LCK-C-GFP)
Cat# RC100017

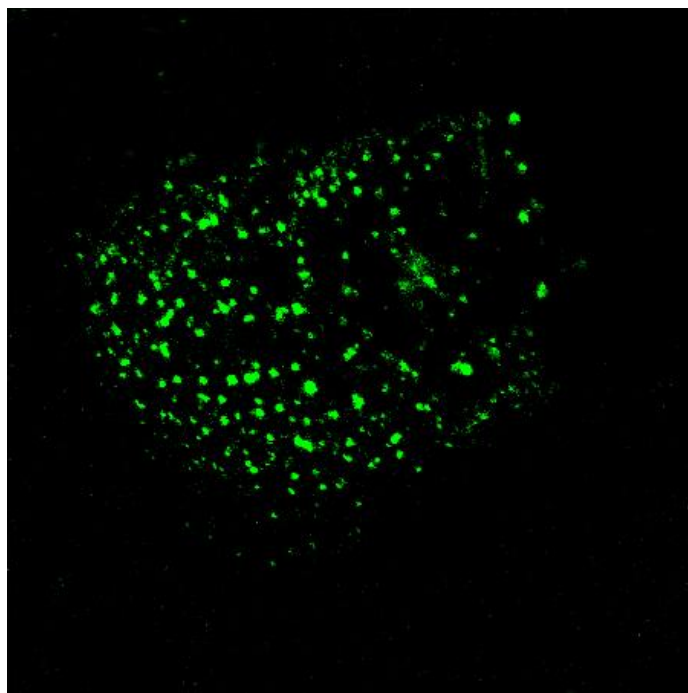


Plasma membrane

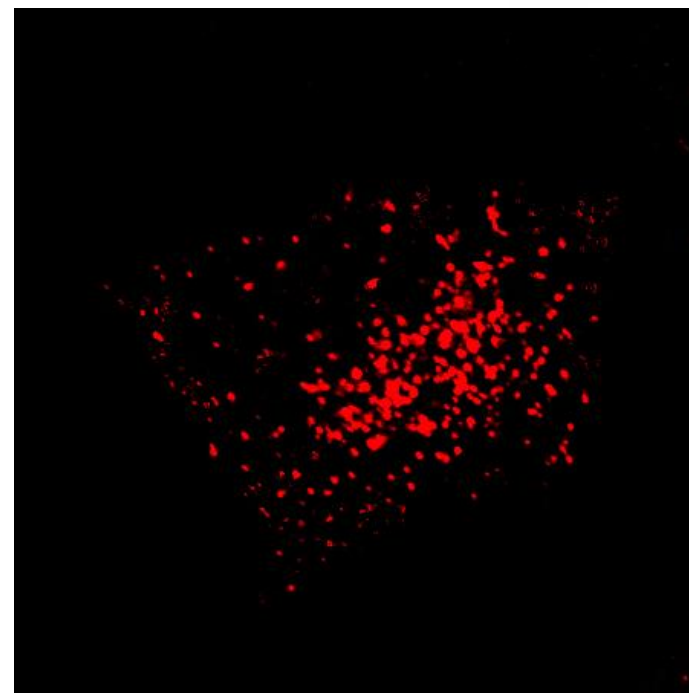
(LCK-C-RFP)
Cat# RC100049

LCK NM_005356

Cellular Organelle Markers



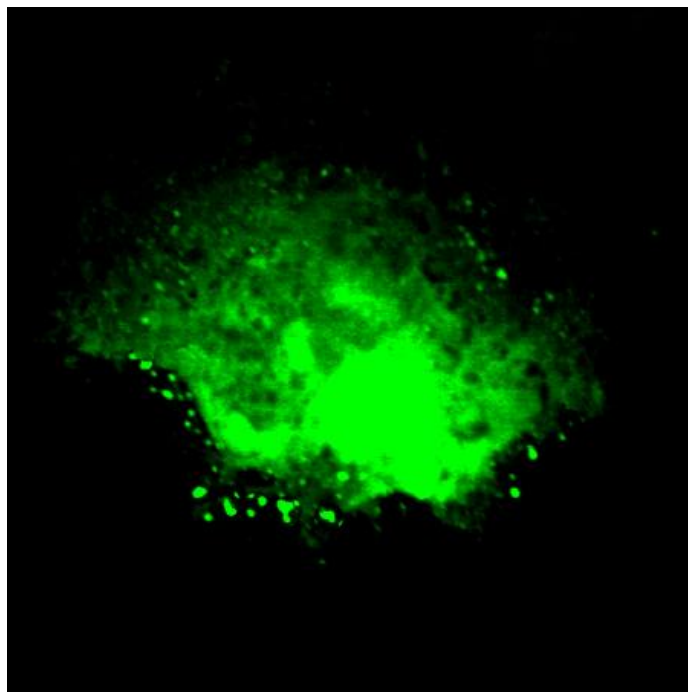
Peroxisome
(PXMP2-N-GFP)
Cat# RC100024



Peroxisome
(PXMP2-N-RFP)
Cat# RC100056

PXMP2 NM_018663

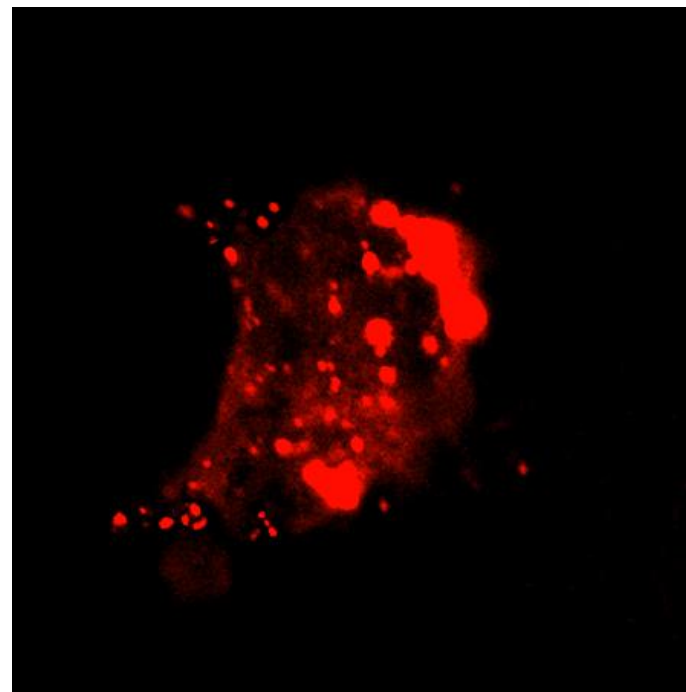
Cellular Organelle Markers



Synaptic vesicles

(SYP-N-GFP)

Cat# RC100028



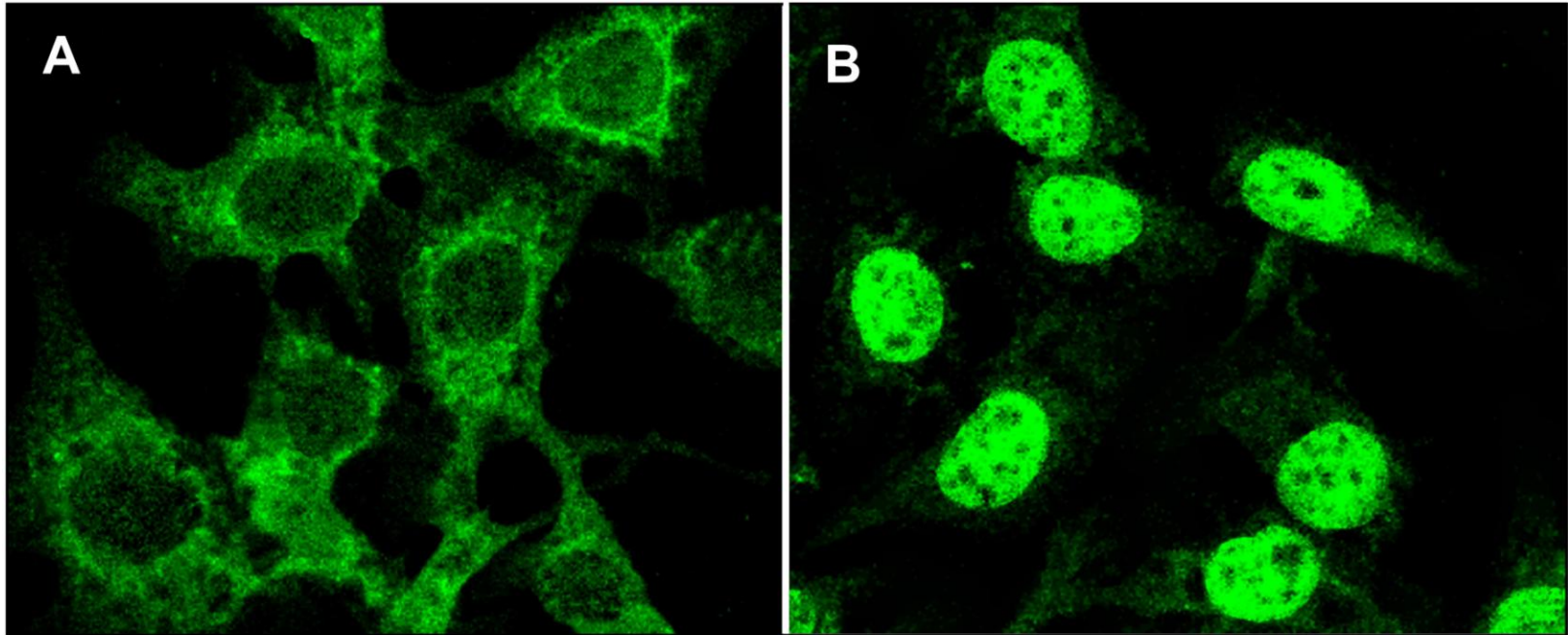
Synaptic vesicles

(SYP-N-RFP)

Cat# RC100060

SYP NM_0103179

Other Proteins

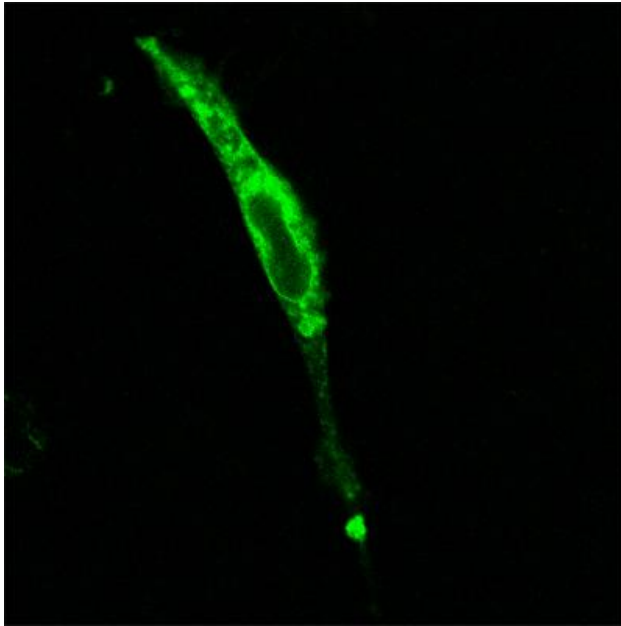


IL-6 -

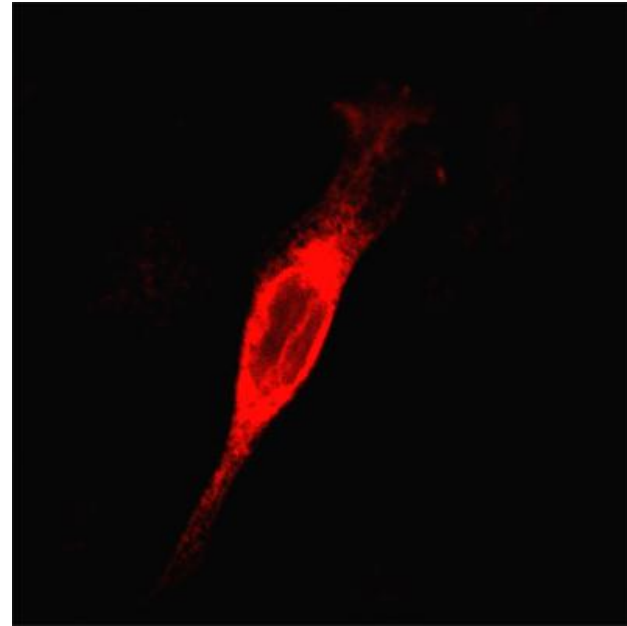
IL-6 +

Stat3 translocation by IL6 stimulation
(STAT3-N-GFP)

Other Proteins



Integrin B1
(ITGB1-C-GFP)
Cat# RG203818



Integrin B1
(ITGB1-C-RFP)

ITGB1 NM_002211